

AMERICAN PILEDIVING EQUIPMENT, INC.

WORLD'S LARGEST PILEDRIVERS

FIELD CATALOG



GO DEEP
OR
GO HOME



APE RULES FOR DRIVING/EXTRACTING PILES

- 1. NEVER STAND UNDER FOUNDATION EQUIPMENT.**
- 2. START WITH PILES IN GOOD CONDITION.**
- 3. PUT ALL CLAMP TEETH IN CONTACT WITH PILE.**
- 4. DRIVE IN STEPS EIGHT FEET OR LESS.**
- 5. KEEP SHEETS PLUMB.**
- 6. COME UP TO SPEED BEFORE DOING WORK.**
- 7. NO DANCING - AVOID DENSIFICATION / REFUSAL.**
- 8. DRIVE PAST OBSTACLES AND THEN GO BACK.**
- 9. BACKHOE ON SITE TO REMOVE OBSTACLES.**
- 10. LEAD WITH THE BALL OF THE SHEET PILE.**
- 11. PROBE THE PILE IF IT APPEARS STUCK.**
- 12. NEVER RUSH THE SHEET PILE FOREMAN.**
- 13. SLOW AND PLUMB AND THE JOB WILL GET DONE.**
- 14. MELTED INNER LOCKS = PILES OUT OF PLUMB.**
- 15. LOW CLAMP PRESSURE MEANS JAW FAILURES.**
- 16. WAIT FOR VIBRO TO GET TO FULL SPEED THEN GO TO WORK**
- 17. DON'T OVER EXCAVATE - LOWER THE RING.**
- 18. LOOK AT THE JAWS DURING DRIVING.**
- 19. BEWARE OF CRACKED OR BROKEN SHEETS.**
- 20. IN SANDY SOILS DRIVE FASTER.**
- 21. IN CLAY AMPLITUDE IS EVERYTHING.**
- 22. LOW DRIVE PRESSURE MEANS EASY WORK.**
- 23. HIGH PRESSURE MEANS FRICTION ON PILES.**
- 24. OVER 4500 PSI MEANS BIGGER HAMMER NEEDED.**
- 25. NO AMPLITUDE MEANS BIGGER HAMMER NEEDED.**
- 26. CAISSONS NEED HEAVY WALL TO AVOID DEFLECTION.**
- 27. CHECK CLAMP BOLTS EACH MORNING.**
- 28. READ THE MANUAL - KNOW YOUR MACHINE.**
- 29. ATTACH WHIP LINE TO PILE WHEN PULLING.**
- 30. KNOW YOUR LINE PULL.**
- 31. EXTRACT STRAIGHT - LOOK AT BOOM AND CABLE.**
- 32. GIVE BOOM STOPS SOME ROOM.**
- 33. STALLED ENGINE MEANS DIRTY FUEL FILTERS.**
- 34. NEVER STAND UNDER FOUNDATION EQUIPMENT.**
- 35. CLEAN ALL DIRT, GREASE, RUST SCALE, PAINT, GALVANIZATION, ETC. FROM PILE IN THE CLAMPING AREA BEFORE CLAMPING/ VIBRATING**

CONTENTS

Vibratory Driver/Extractors	2
Variable Moment Vibratory Driver/Extractors	4
Excavator Mounted Vibratory Driver/Extractors	5
Low Headroom Vibratory Driver/Extractors	6
Tandem Vibratory Driver/Extractors	7
Driver/Extractors Accessories/Attachments	8
Model 20, 50, 150, 200, 300, & 400 Universal Clamps	10
Model 50 and 150 Dunce Clamps	12
Model 100 and 200 Caisson Clamps	12
Standard Caisson Beams	14
Quad Beam	16
Wood and Concrete Pile Clamps	17
Wick Drain Machines	20
Top Drive Augers	22
HD Drivers	24
Hydraulic Impact Hammer (HIH)	26
Power Units	28
Single Acting Diesel Hammer	30
Pipe Inserts/Sheet Pile Inserts	32
H-Pile Inserts/Wood Inserts	34
Box Inserts	35
Drive Cap Bases	36
Striker Plates/One Piece Box Helmets	37
Two Piece Box Helmets/Pipe Helmets	38
Box Leads	40
Front Riding Leads	41
Offshore Leads	42
Bottom Drive Systems/Offshore Bell	43
Spotters	44
J&M EQUIPMENT	45
Vibratory Driver/Extractors	46
Power Units	47
Hydraulic Impact Hammer (HIH)	48
Top Drive Augers	50
RoboVib	52
Low Headroom Vibratory Driver/Extractors	54
Driver/Extractors Accessories/Attachments	54
Model 24, 30 Pile Crusher	55
Caisson Beams	56
Vibratory Hydraulic Clamps	56
Model 3030 Drill Mast	57

VIBRATORY SILVERBACK™ SPECS

Models	60	300-2	300-2	300-4	300-6	300-6
Power Unit	275	456	577	800	800	950
Eccentric Moment	1,300 in-lbs (14.98 kg-m)	2,660 in-lbs (31 kg-m)	2,660 in-lbs (31 kg-m)	5,320 in-lbs (61.29 kg-m)	7,980 in-lbs (91.93 kg-m)	7,980 in-lbs (91.93 kg-m)
Drive Force at Rated Frequency	61 tons (538 kN)	103 tons (915 kN)	129 tons (1,150 kN)	259 tons (2,300 kN)	309 tons (2,744 kN)	388 tons (3,449 kN)
(VPM) Rated Frequency	0 - 1,850	0 - 1,650	0 - 1,850	0 - 1,850	0 - 1,650	0 - 1850
Max Line Pull	56 tons (498 kN)	108 tons (961 kN)	108 tons (961 kN)	133 tons (1,183 kN)	185 tons (1,646 kN)	185 tons (1,646 kN)
Max Bare Hammer Weight	5,857 lbs (2,657 kg)	9,480 lbs (4,300 kg)	9,480 lbs (4,300 kg)	16,850 lbs (7,643 kg)	21,200 lbs (9,616 kg)	21,200 lbs (9,616 kg)
Throat Width	19 in (48 cm)	22.00 in (55 cm)	22.00 in (55 cm)	21.67 in (55 cm)	23.00 in (58 cm)	23.00 in (58 cm)
Length	69 in (175 cm)	94.00 in (239 cm)	94.00 in (239 cm)	125.6 in (319 cm)	155.00 in (394 cm)	155.00 in (394 cm)
Height w/o Clamp	54 in (378 cm)	71.40 in (181 cm)	71.40 in (181 cm)	81.62 in (207 cm)	81.62 in (207 cm)	81.62 in (207 cm)

VIBRATORY DRIVER SPECS

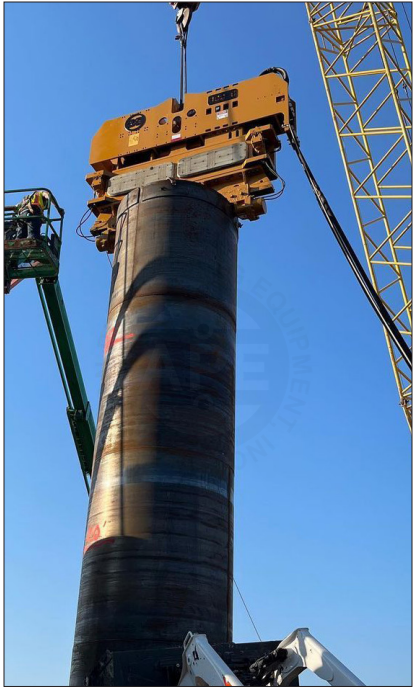
Models	6	20	50	100	150T	200	200-6	
Power Unit	14	275	275	375	475	595	800	
Eccentric Moment	60 in-lbs (.69 kg-m)	900 in-lbs (10.37 kg-m)	1,300 in-lbs (14.98 kg-m)	2,200 in-lbs (25.35 kg-m)	2,600 in-lbs (29.96 kg-m)	4,400 in-lbs (50.69 kg-m)	6,600 in-lbs (76.04 kg-m)	
Drive Force at Rated Frequency	4 tons (37 kN)	35 tons (310 kN)	50 tons (447 kN)	85 tons (757 kN)	101 tons (894 kN)	170 tons (1,513 kN)	255 tons (2,270 kN)	
(VPM) Rated Frequency	0 - 2,200	0 - 1,650	0 - 1,650	0 - 1,650	0 - 1650	0 - 1,650	0 - 1,650	
Max Line Pull	6 tons (53 kN)	28 tons (249 kN)	56 tons (498 kN)	45 tons (400 kN)	108 tons (961 kN)	133 tons (1,183 kN)	185 tons (1,646 kN)	
Max Bare Hammer Weight	720 lbs (327 kg)	2,510 lbs (1,139 kg)	4,550 lbs (2,064 kg)	5,900 lbs (2,676 kg)	8,500 lbs (3,856 kg)	12,760 lbs (5,788 kg)	18,900 lbs (8,573 kg)	
Throat Width	6.00 in (15 cm)	12.00 in (30 cm)	14.63 in (37 cm)	14.50 in (37 cm)	14.25 in (36 cm)	14.75 in (37 cm)	14.75 in (37 cm)	
Length	36.25 in (92 cm)	36.50 in (93 cm)	57.25 in (145 cm)	61.88 in (157 cm)	88.75 in (225 cm)	104.00 in (264 cm)	140.00 in (356 cm)	
Height w/o Clamp (Model 3 & 6 Incl. Clamp)	38.00 in (97 cm)	45.00 in (114 cm)	53.50 in (136 cm)	54.13 in (137 cm)	72.38 in (184 cm)	65.50 in (166 cm)	75.00 in (191 cm)	



VIBRATORY DRIVER/EXTRACTORS



	400	600	600B
	950	1200	1200
	11,500 in-lbs (132.49 kg-m)	17,200 in-lbs (198.17 kg-m)	17,200 in-lbs (198.17 kg-m)
	298 tons (2,648 kN)	445 tons (3,960 kN)	445 tons (3,960 kN)
	0 - 1,350	0 - 1,350	0 - 1,350
	234 tons (2,082 kN)	351 tons (3,123 kN)	451 tons (4,012 kN)
	34,010 lbs (15,427 kg)	45,225 lbs (20,514 kg)	59,000 lbs (26,762 kg)
	33.00 in (84 cm)	37.00 in (94 cm)	37.88 in (96 cm)
	151.00 in (383 cm)	183.50 in (466 cm)	183.50 in (466 cm)
	106.75 in (271 cm)	108.19 in (275 cm)	127.07 in (323 cm)



Note: All technical specifications are subject to change without notice.

VARIABLE MOMENT VIBRATORY DRIVER/EXTRACTORS

	120VM	170VM	250VM	300VM*
Eccentric Moment	1,600 in-lbs (18.43 kg-m)	2,250 in-lbs (25.92 kg-m)	4,500 in-lbs (51.85 kg-m)	4532 in-lbs (52 kg-m)
Drive Force	95 tons (849 kN)	134 tons (1,195 kN)	269 tons (2,389 kN)	284 tons (2,524 kN)
Frequency (VPM) Maximum	0 - 2,050	0 - 2,050	0 - 2,050	0 - 2,100
Max Line Pull	81 tons (721 kN)	81 tons (721 kN)	99 tons (881 kN)	69 tons (614 kN)
Max Bare Hammer Weight	7,500 lb (3,402 kg)	8,900 lb (4,037 kg)	15,400 lb (6,985 kg)	17,576 lb (7,643 kg)
Throat Width	14.00 in (36 cm)	14.00 in (36 cm)	14.00 in (36 cm)	19.50 in (50 cm)
Length	69.00 in (175 cm)	69.00 in (175 cm)	69.00 in (175 cm)	99.75 in (253 cm)
Height w/o Clamp	77.00 in (196 cm)	77.00 in (196 cm)	102.00 in (259 cm)	102.00 in (259 cm)

APE Variable Moment Technology lets our driver/extractors shine in jobs with vibration sensitive requirements. APE Variable Moment Technology is teamed with all the special features available with the full line of APE Vibratory Driver/Extractors.

- Gun drilled top plate and manifolds eliminate unnecessary hydraulic hoses.
- O-ring sealed gearbox makes transition to underwater operations easy.
- Vegetable hydraulic oil reduces environmental impact and fines if a spill occurs.
- Long term warranty protection



EXCAVATOR MOUNTED VIBRO



EXCAVATOR MOUNTED VIBRATORY DRIVER/EXTRACTORS

	15E	20E	50E	60E*	100E	64X
Eccentric Moment	600 in-lbs (6.91 kgm)	900 in-lbs (10.37 kgm)	1,300 in-lbs (14.98 kgm)	1,245 in-lbs (14.35 kgm)	2,200 in-lbs (25.35 kgm)	781 in-lbs (9.00 kgm)
Drive Force	23 tons (206 kN)	35 tons (310 kN)	50 tons (447 kN)	61 tons (538 kN)	85 tons (757 kN)	30 tons (269 kN)
(VPM) Rated Frequency	0 - 1,650	0 - 1,650	0 - 1,650	0 - 1,850	0 - 1,650	0 - 1,650
Max Line Pull	9 tons (80 kN)	18 tons (160 kN)	18 tons (160 kN)	56 tons (498 kN)	44 tons (391 kN)	32 tons (285 kN)
Max Bare Hammer Weight	1,690 lb (767 kg)	2,540 lb (1,152 kg)	3,940 lb (1,787 kg)	5,857 lb (2,657 kg)	4,840 lb (2,195 kg)	4,650 lb (2,109 kg)
Throat Width	9.63 in (24 cm)	12.38 in (31 cm)	14.00 in (36 cm)	19.00 in (48 cm)	14.50 in (37 cm)	13.75 in (35 cm)
Length	36.50 in (93 cm)	36.50 in (93 cm)	57.25 in (145 cm)	69.00 in (175 cm)	57.00 in (145 cm)	70.00 in (178 cm)
Height w/o Clamp	40.13 in (102 cm)	47.88 in (122 cm)	49.13 in (125 cm)	87.00 in (221 cm)	56.50 in (144 cm)	42.50 in (108 cm)

LOW HEADROOM VIBRATORY DRIVER/EXTRACTORS

	150	200	200-6
Eccentric Moment	2,200 in-lbs (25.35 kg-m)	4,400 in-lbs (50.69 kg-m)	6,600 in-lbs (76.04 kg-m)
Drive Force	85 tons (756 kN)	170 tons (1,513 kN)	255 tons (2,270 kN)
Max Frequency (VPM)	0 - 1,650	0 - 1,650	0 - 1,650
Max Line Pull	Consult Factory	Consult Factory	Consult Factory
Max Bare Hammer Weight	Consult Factory	Consult Factory	Consult Factory
Throat Width	Consult Factory	Consult Factory	Consult Factory
Length	Consult Factory	Consult Factory	Consult Factory
Height w/o Clamp	Consult Factory	Consult Factory	Consult Factory



LOW HEADROOM & TANDEM DRIVER/EXTRACTORS



TANDEM VIBRATORY DRIVER/EXTRACTORS

	50 Tandem Low Headroom	100 Tandem Low Headroom	150 Tandem Low Headroom	200 Tandem Low Headroom	400 Tandem 11' Quad Clamp	600 Tandem 15' Quad Clamp
Eccentric Moment	2,600 in-lbs (29.96 kg-m)	4,400 in-lbs (50.69 kg-m)	4,400 in-lbs (50.69 kg-m)	8,800 in-lbs (101.39 kg-m)	23,000 in-lbs (264.99 kg-m)	34,400 in-lbs (396.33 kg-m)
Drive Force	101 tons (949 kN)	170 tons (1,513 kN)	181 tons (1,606 kN)	340 tons (3,026 kN)	595 tons (5,294 kN)	890 tons (7,918 kN)
(VPM) Max Frequency	0 - 1,650	0 - 1,650	0 - 1,700	0 - 1,650	0 - 1,350	0 - 1,350
Pile Clamping Force	Consult Factory	Consult Factory	Consult Factory	Consult Factory	Consult Factory	Consult Factory
Max Line Pull	112 tons (996 kN)	186 tons (1,655 kN)	216 tons (1,922 kN)	266 tons (2,366 kN)	468 tons (4,164 kN)	702 tons (6,245 kN)
Total Setup Weight	Consult Factory	Consult Factory	Consult Factory	Consult Factory	Consult Factory	Consult Factory
Max Pressure	Consult Factory	Consult Factory	Consult Factory	Consult Factory	Consult Factory	Consult Factory
Length	Consult Factory	Consult Factory	Consult Factory	Consult Factory	Consult Factory	Consult Factory
Width	Consult Factory	Consult Factory	Consult Factory	Consult Factory	Consult Factory	Consult Factory
Height with Clamp	Consult Factory	Consult Factory	Consult Factory	Consult Factory	Consult Factory	Consult Factory

Note: All technical specifications are subject to change without notice.

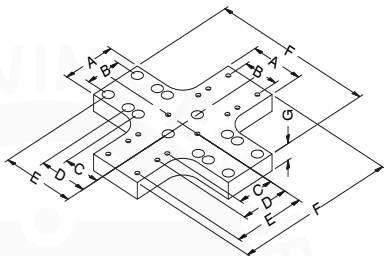
DRIVER/EXTRACTOR ACCESSORIES

Specification	Weight	A	B
90 Degree Turn Plate	600 lb (272 kg)	12 in (30.48 cm)	8 in (20.3 cm)
4' Extension	2,500 lb (1,134 kg)	37 in (94 cm)	11 in (28 cm)
8' Extension	4,000 lb (1,814 kg)	37 in (94 cm)	11 in (28 cm)
Caisson Beam to Attachment Adapter	1,200 lb (680 kg)	4.94 in (12.5 cm)	8.00 in (20.3 cm)

**HYBRID EXTENSION
CALLED THE
CALIFORNIA STINGER
FOR TIGHT WORKING
DIMENSIONS.**



90 DEGREE TURN PLATE.

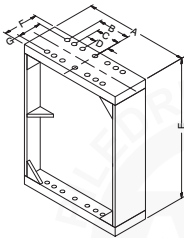




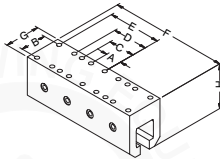
ATTACHMENTS/ACCESSORIES

C	D	E	F	G	H
8.25 in (21 cm)	11 in (28 cm)	16.5 in (42 cm)	37 in (94 cm)	3.50 in (8.9 cm)	-
8.25 in (21 cm)	4.94 in (12.55 cm)	48 in (122 cm)	12 in (30.5 cm)	8 in (20.3 cm)	-
8.25 in (21 cm)	4.94 in (12.55 cm)	96 in (243.8 cm)	12 in (30.5 cm)	8 in (20.3 cm)	-
8.25 in (21 cm)	11 in (28 cm)	16.5 in (42 cm)	37 in (94 cm)	11.5 in (29.21 cm)	14 in (35.56 cm)

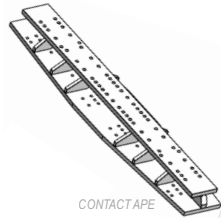
4' & 8' EXTENSION



CAISSON BEAM TO ATTACHMENT ADAPTER

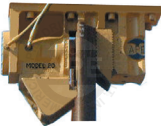


BEAM STIFFENER



MODEL 20, 50 & 150 UNIVERSAL CLAMPS

	Weight	Piston Dia.	Piston Stroke	Cyl. Force	A	B	C	D	E
20	790 lb (358 kg)	5 in (127 mm)	2.25 in (57 mm)	88 kips (391 kN)	29.63 in (752 mm)	10 in (254 mm)	28.63 in (727 mm)	11.75 in (298 mm)	8.56 in (217 mm)
50	1,350 lb (612 kg)	8 in (203 mm)	2.25 in (57 mm)	226 kips (1005 kN)	44 in (1,117 mm)	12 in (304 mm)	35 in (889 mm)	12.25 in (311 mm)	10.25 (260 mm)
150	1,540 lb (698 kg)	8 in (203 mm)	2.25 in (57 mm)	226 kips (1005 kN)	44 in (1117 mm)	12 in (304 mm)	35 in (889 mm)	12.88 in (327 mm)	10.25 (260 mm)



MODEL 20



MODEL 50



MODEL 150



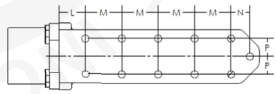
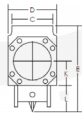
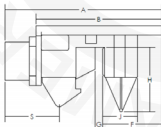
MODEL 200

MODEL 200, 300, & 400 UNIVERSAL CLAM

	Weight	Piston Dia.	Piston Stroke	Cyl. Force	A	B	C	D	E
200	2,200 lb (998 kg)	8 in (203 mm)	2.25 in (57 mm)	226 kips (1,005 kN)	50 in 270 mm	11.75 in 298 mm	41 in 1,041 mm	18.25 in 463 mm	9 in 228 mm
300	2850 lbs 1295 kg	10 in 254 mm	3 in 76 mm	392 kips 1744 kN	57 in 1450 mm	45.25 in 1200 mm	12 in 305 mm	15 in 381 mm	35.25 in 819 mm
400	7,200 lb (3266 kg)	15 in (381 mm)	2.85 in (72.4 mm)	800 kips (3,559 kN)	72.4 in 1,839 mm	15.75 in 400 mm	60 in 1,524 mm	30.8 in 782.3 mm	15.8 in 401.3mm



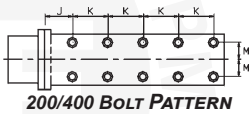
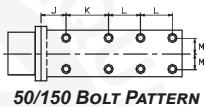
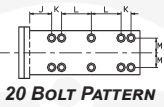
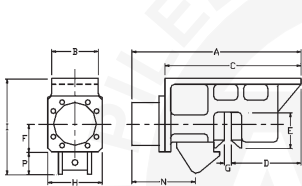
MODEL 300





CLAMPS

F	G	H	I	J	K	L	M	N	P
4.62 in (117 mm)	2.12 in (54 mm)	6 in (152 mm)	13.5 in (343 mm)	4.62 in (117 mm)	2.75 in (70 mm)	8.25 in (209 mm)	4 in (101 mm)	7 in (178 mm)	5 in (127 mm)
7.19 in (182 mm)	1.44 in (37 mm)	14 in (356 mm)	22.38 in (568 mm)	5 in (127 mm)	11 in (279 mm)	8.25 in (209 mm)	4 in (101 mm)	15.17 in (385 mm)	5 in (127 mm)
7 in (178 mm)	1.44 in (37 mm)	14 in (356 mm)	27.75 in (705 mm)	5 in (127 mm)	11 in (279 mm)	8.25 in (209 mm)	4 in (101 mm)	15 in (383 mm)	5 in (127 mm)

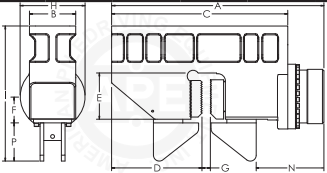


PS

F	G	H	I	J	K	L	M	N	P	R
7 in 178 mm	1.69 in 44 mm	15 in 381 mm	29.88 in 759 mm	5.75 in 146 mm	8.25 in 209 mm		4 in 102 mm	21 in 533 mm	5 in 127 mm	
22.63 in 575 mm	2.5 in 64 mm	10.88 in 276 mm		9 in 229 mm	7.38 in 187 mm	5.88 in 149 mm	8.25 in 210 mm	4.28 in 109 mm	4 in 102 mm	24.13 in 613 mm
11 in 279.4mm	2.86 in 72.6 mm	22 in 559 mm	46 in 1,168 mm	5.75 in 146 mm	Consult Factory		4 in 101.6 mm	9.2 in 233.7 mm	6.44 in 163.6 mm	



MODEL 400

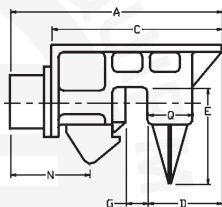
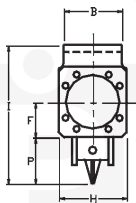


Note: All technical specifications are subject to change without notice.

MODEL 50 & 150 DUNCE CLAMPS

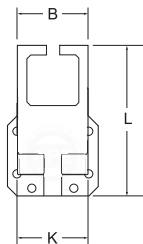
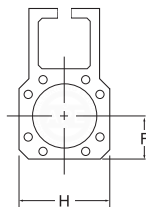
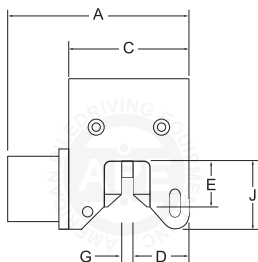
	Weight	Piston Dia.	Piston Stroke	Cyl. Force	A	B	C	D	E	F
50	1,350 lb (612 kg)	8 in (20.3 cm)	2.25 in (5.7 cm)	226 kips (1,005 kN)	44 in (111.7 cm)	12 in (30.4 cm)	35 in (88.9 cm)	12.25 in (31.1 cm)	10.25 in (26.0 cm)	7 in (17.8 cm)
150	1,540 lb (698 kg)	8 in (20.3 cm)	2.25 in (5.7 cm)	226 kips (1,005 kN)	44 in (111.7 cm)	12 in (30.4 cm)	35 in (88.9 cm)	12.88 in (32.7 cm)	10.25 in (26.0 cm)	7 in (17.8 cm)

MODEL 150 DUNCE



MODEL 100 & 200 CAISSON CLAMPS

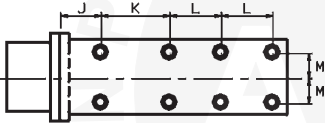
	Weight	Piston Dia.	Piston Stroke	Cyl. Force	A	B	C
100	1,110 lb (498 kg)	8 in (203 mm)	2.25 in (57 mm)	226 kips (1,005 kN)	27.63 in (701 mm)	11 in (279 mm)	18.63 in (473 mm)
200	1,340 lb (608 kg)	8 in (203 mm)	2.25 in (57 mm)	226 kips (1,005 kN)	31.88 in (809 mm)	11 in (279 mm)	22.88 in (581 mm)



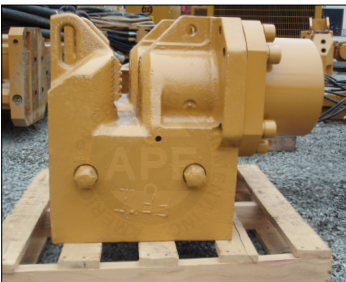


CLAMPS

	G	H	I	J	K	L	M	N	P	Q
	1.75 in (44.5 cm)	14 in (356 cm)	22.75 in (57.7 cm)	5 in (12.7 cm)	11 in (27.9 cm)	8.25 in (20.9 cm)	4 in (10.1 cm)	15 in (38.3 cm)	5 in (12.7 cm)	11.5 in (29.2 cm)
	1.75 in (44.5 cm)	14 in (35.6 cm)	27.75 in (70.5 cm)	5 in (12.7 cm)	11 in (27.9 cm)	8.25 in (20.9 cm)	4 in (10.1 cm)	15 in (38.3 cm)	5 in (12.7 cm)	11.5 in (29.2 cm)



	D	E	F	G	H	J	K	L
	6 in (152 mm)	6.63 in (168 mm)	7.25 in (184 mm)	1.5 in (38 mm)	14 in (355 mm)	10.88 in (276 mm)	11 in (279 mm)	23.38 in (594 mm)
	10.81 in (274 mm)	6.63 in (168 mm)	7.25 in (184 mm)	1.5 in (38 mm)	14 in (355 mm)	10.88 in (276 mm)	11 in (279 mm)	23.38 in (594 mm)



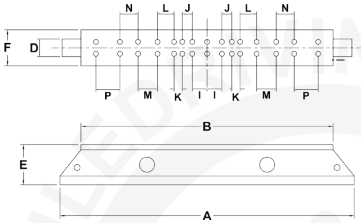
Note: All technical specifications are subject to change without notice.



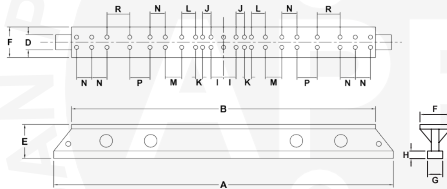
STANDARD CAISSON BEAMS

	Max Dia. Caisson	Weight	A	B	C	D	E	F	G
5 ft	33.15 in (0.84 m)	1,000 lb (454 kg)	60 in (1.52 m)	60 in (1.52 m)	8 in (20.3 cm)	5.9 in (15 cm)	13.41 in (34 cm)	12 in (30.5 cm)	-
8 ft	69.15 in (1.75 m)	1,500 lb (680 kg)	96 in (2.44 m)	73.5 in (1.87 m)	8 in (20.3 cm)	5.9 in (15 cm)	13.41 in (34 cm)	12 in (30.5 cm)	-
11 ft	106.00 in (2.69 m)	3,030 lb (1,374 kg)	132 in (3.35 m)	120 in (3.04 m)	8 in (20.3 cm)	5.9 in (15 cm)	13.41 in (34 cm)	12 in (30.5 cm)	-
13 ft	129.5 in (3.29 m)	3,593 lb (1,630 kg)	156 in (3.96 m)	156 in (3.96 m)			18 in (45.7 cm)	13.5 in (34.3 cm)	5.9 in (150 mm)
15 ft	153.5 in (3.9 m)	8889 lb (4032 kg)	180 in (4.57 m)	164 in (4.165 m)	18 in (45.72 cm)	18 in (45.72 cm)	30.04 in (76.30 cm)	31 in (78.74 cm)	5.9 in (150 mm)
17 ft	177.5 in (4.51 m)	8368.7 lb (3800.5 kg)	204 in (5.18 m)	184 in (4.674 m)	16 in (40.64 cm)	16 in (40.64 cm)	40 in (101.6 cm)	31 in (78.74 cm)	5.9 in (150 mm)

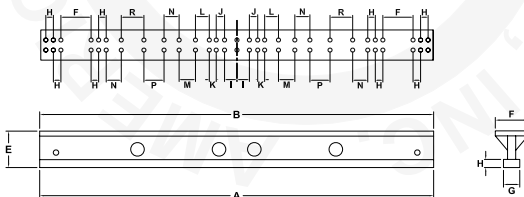
5FT & 8FT BEAM



11FT BEAM



13FT BEAM

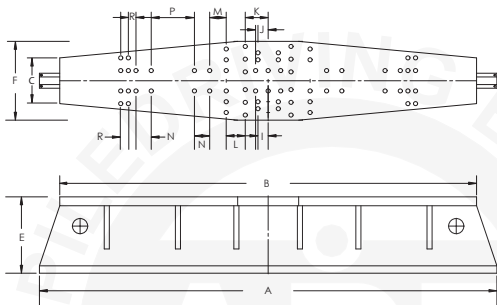




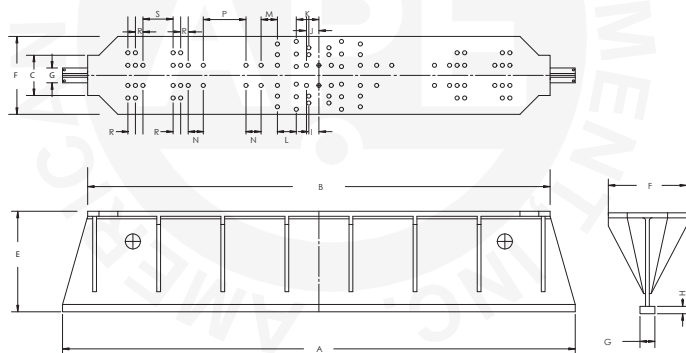
CAISSON BEAMS

H	I	J	K	L	M	N	P	R	S
2.905 in (73.8 mm)	4.94 in (125 mm)	3.31 in (84 mm)	2.75 in (70 mm)	5.5 in (140 mm)	6.5 in (165 mm)	6 in (152 mm)	8 in (203 mm)	-	
2.905 in (73.8 mm)	4.94 in (125 mm)	3.31 in (84 mm)	2.75 in (70 mm)	5.5 in (140 mm)	6.5 in (165 mm)	6 in (152 mm)	8 in (203 mm)	-	
2.905 in (73.8 mm)	4.94 in (125 mm)	3.31 in (84 mm)	2.75 in (70 mm)	5.5 in (140 mm)	6.5 in (165 mm)	6 in (152 mm)	8 in (203 mm)	9 in (229 mm)	
2.905 in (73.8 mm)	5 in (127 mm)	3.31 in (84 mm)	2.75 in (70 mm)	5.5 in (140 mm)	6.5 in (165 mm)	6 in (152 mm)	8 in (203 mm)	9 in (229 mm)	
2.91 in (73.9 mm)	4.00 in (101.6 mm)	4.94 in (125.73 mm)	9 in (228.6 mm)	7.5 in (190.5 mm)	6.5 in (165.1 mm)	6 in (152.4 mm)	17 in (431.8 mm)	3 in (76.2 mm)	
2.91 in (73.9 mm)	4.00 in (101.6 mm)	4.94 in (125.73 mm)	9 in (228.6 mm)	7.5 in (190.5 mm)	6.5 in (165.1 mm)	6 in (152.4 mm)	17 in (431.8 mm)	3 in (76.2 mm)	12 in (304.8 mm)

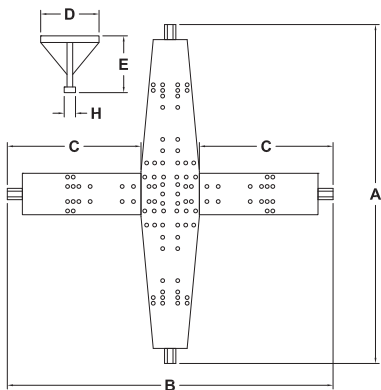
15FT BEAM



17FT BEAM



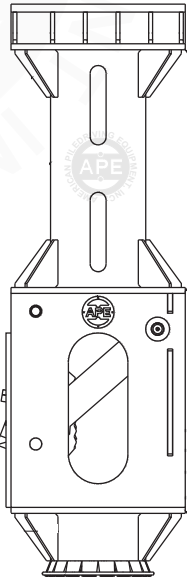
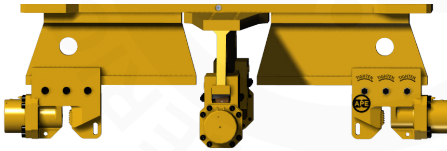
Note: All technical specifications are subject to change without notice.



QUAD BEAM

	Weight	A	B	C	
10 ft	7000 lbs (3175 kg)	120 in (304.8 cm)	118 in (300 cm)	49 in (124.5 cm)	
11 ft	9,500 lb (4,309 kg)	134 in (340 cm)	136 in (345 cm)	53 in (134.6 cm)	
12 ft	8650 lbs (3920 kg)	144 in (365.8 cm)	144 in (365.8 cm)	57.81 in (146.8 cm)	
13 ft	13570 lbs (6155 kg)	156 in (386 cm)	156 in (386 cm)	62.5 in (158.8 cm)	
15 ft	13,000 lb (5,896 kg)	180 in (457.2 cm)	184 in (467.3 cm)	75 in (190.5 cm)	
17 ft	15,000 lb (6,803 kg)	206 in (523.2 cm)	208 in (528.3 cm)	89 in (226 cm)	

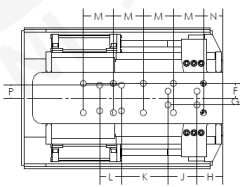
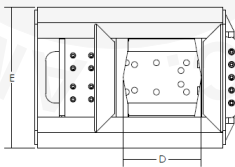
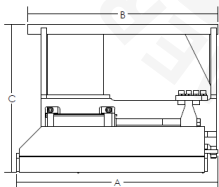
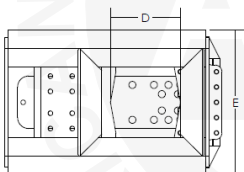
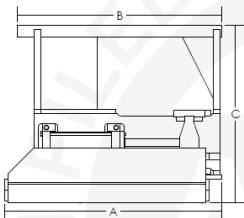
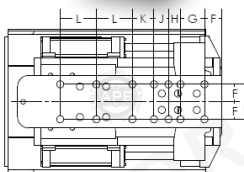
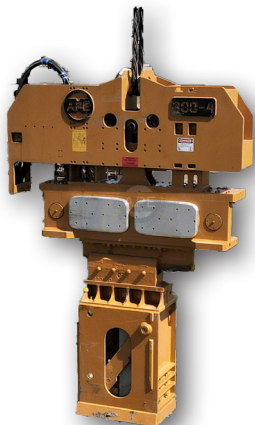
QUAD BEAM|WOOD/CONCRETE CLAMP



	D	E	H
	22 in (55.9 cm)	24 in (61 cm)	6 in (152 mm)
	31 in (78.7 cm)	21 in (53.3 cm)	6 in (152 mm)
	28.38 in (72.1 cm)	24 in (61 cm)	6 in (152 mm)
	31 in (78.7 cm)	30 in (76.2 cm)	6 in (152 mm)
	31 in (78.7 cm)	30 in (76.2 cm)	6 in (152 mm)
	31 in (78.7 cm)	40 in (101.6 cm)	6 in (152 mm)

Model 20 Kauai Stinger Wood Clamp

Note: All technical specifications are subject to change without notice.



Model	Weight		
C102	3250 lbs 1475 kg		
20 Hybrid	3800 lbs 1725 kg		
/	A	B	C
C102	49.75 in 1264 mm	46.75 in 1188 mm	40.5 in 1042 mm
20 Hybrid	55.25 in 1403 mm	52.25 in 1327 mm	40.5 in 1042 mm
/	K	L	M
C102	6.06 in 154 mm	4.94 in 125 mm	8.25 in 210 mm
20 Hybrid	8.25 in 210 mm	7.13 in 181 mm	8 in 203 mm

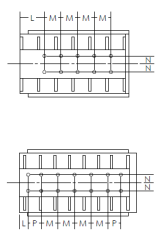
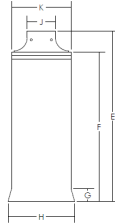
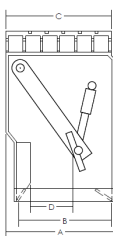
Model	Weight			
20	5900 lbs 2675 kg			
25	6500 lbs 2950 kg			
32	9100 lbs 4130 kg			
32 New	13200 lbs 5990 kg			
/	A	B	C	D
20	44 in 1118 mm	42.75 in 1086 mm	44 in 1118 mm	20 in 508 mm
25	56.75 in 1441 mm	47.84 in 1215 mm	52.25 in 1327 mm	25.5 in 648 mm
32	62.75 in 1594 mm	53.55 in 1360 mm	54.75 in 1391 mm	32 in 813 mm
32 New	64.25 in 1632 mm	54.19 in 1376 mm	62.25 in 1581 mm	28.31 in 719 mm



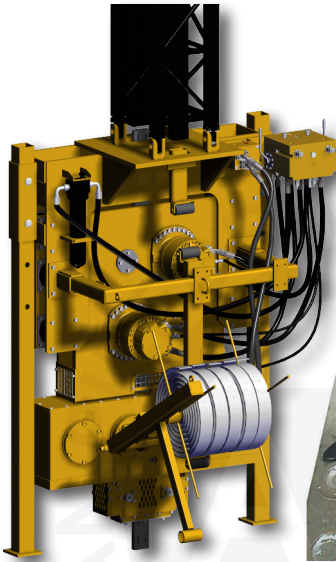
WOOD/CONCRETE CLAMP

Piston Diameter			Cylinder Force		
4 in 102 mm			30.5 Short tons 271 kN		
4 in 102 mm			30.5 Short tons 271 kN		
D	E	F	G	H	J
15.5 in 394 mm	33 in 838 mm	4 in 102 mm	1.88 in 48 mm	3.5 in 89 mm	5.5 in 140 mm
20 in 508 mm	38.5 in 978 mm	4 in 102 mm	1.88 in 48 mm	3.5 in 89 mm	5.38 in 137 mm
N	P	R	R	S	T
5.75 in 146 mm	4.31 in 110 mm	1.81 in 46 mm	1.81 in 46 mm	10.94 in 278 mm	6 in 152 mm
12.75 in 324 mm	6 in 152 mm	/	/	/	/

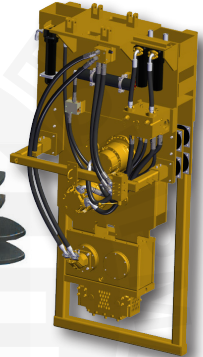
Piston Diameter				Cylinder Force					
7 in 178 mm				67 Short Tons 600 kN					
7 in 178 mm				67 Short Tons 600 kN					
7 in 178 mm				67 Short Tons 600 kN					
7 in 178 mm				67 Short Tons 600 kN					
E	F	G	H	J	K	L	M	N	P
71.5 in 1816 mm	61.5 in 1562 mm	6.0 in 152 mm	32 in 813 mm	14 in 356 mm	26.75 in 679 mm	7 in 178 mm	8.25 in 210 mm	4 in 102 mm	/
84.25 in 2140 mm	74 in 1880 mm	6.25 in 159 mm	35 in 889 mm	14 in 356 mm	30.75 in 781 mm	7.19 in 183 mm	8.25 in 210 mm	4 in 102 mm	/
86.25 in 2191 mm	74 in 1880 mm	6.0 in 152 mm	43.33 in 1101 mm	14 in 356 mm	38.25 in 972 mm	4.35 in 111 mm	8.25 in 210 mm	4 in 102 mm	6.5 in 165 mm
88.25 in 2242 mm	74 in 1880 mm	6.30 in 160 mm	43.38 in 1102 mm	14 in 356 mm	38.75 in 984 mm	/	/	/	/



Note: All technical specifications are subject to change without notice.



The APE wick installer allows the mandrel to pass directly through the center of the vibrator, while a sprocket drive provides static force. The sprocket drive delivers equal force on both sides of the mandrel for perfect axial loading with "On The Fly" vibration when needed with all the crowd right at the point of entry into the ground stabilizing mandrel flexion.



BOTTOMDRIVE™ WICK DRAIN

	28	100	200
Static (Crowd) Force	28 US tons (247 kN)	27.8 US tons (247 kN)	27.8 US tons (247 kN)
Dynamic Force @ 1650 vpm	-	23.7 US tons (211 kN)	56 US tons (498 kN)
Combined Static/ Dynamic Force	-	51.5 US tons (458 kN)	83.8 US tons (746 kN)
Operating Frequency	-	0 - 1,650 vpm	0-1, 650 vpm
Suspended Weight	5,623 lb (2,550.55 kg)	8,500 lb (3,855 kg)	10,780 lb (4,889 kg)
Maximum Pressure	5,500 psi (380 bars)	5,500 psi (380 bars)	5,500 psi (380 bars)
Length	70.94 in (180 cm)	84 in (213 cm)	84 in (213 cm)
Width	47 in (119 cm)	47 in (119 cm)	47 in (119 cm)
Height	91.5 in (232.4 cm)	109 in (276.8 cm)	120 in (304.8 cm)



WICK DRAIN



TOP DRIVE AUGERS

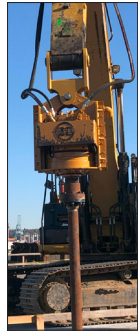
Model		12K	20K	25BB	50BB
Low Speed High Torque	Torque ft-lbs (kg-m)	12,000 Ft-lbs. (1,659 kgm)	20,000 Ft-lbs. (2,765 kgm)	4,844 per 1,000 psi (669.71 per 69 bar)	9,688 per 1,000 psi (1,339.41 per 69 bar)
	Max Pressure	4,500 psi (310 bar)	4,100 psi (283 bar)	5,500 psi (379.21 bar)	5,800 psi (399.9 bar)
	Rotation Speed	35 rpm	30 rpm	40 rpm	36 rpm
	Max Flow gpm (lpm)	30 gpm (114 lpm)	46 gpm (174 lpm)	66 @ 1.11 gal/rev (250 @ 4.2 lit/rev)	120 @ 3.33 gal/rev (454 @ 12.6 lit/rev)
	Max Horse Power	80 hp ()	110 hp (82 kW)	212 hp (158.09 kW)	406 hp (302.75 kW)
High Speed Low Torque	Torque ft-lbs (kg-m)	N/A	N/A	2,422 per 1,000 psi (334.85 per 69 bar)	4,844 per 1,000 psi (669.71 per 69 bar)
	Max Pressure	N/A	N/A	5,500 psi (379.21 bar)	4,570 psi (315.09 bar)
	Rotation Speed	N/A	N/A	80 rpm	72 rpm
	Max Flow gpm (lpm)	N/A	N/A	66 @ 0.55 gal/rev (250 @ 2.08 lit/rev)	120 @ 1.66 gal/rev (454 @ 6.28 lit/rev)
	Max Horse Power	N/A	N/A	212 hp (158.09 kW)	320 hp (238.62 kW)
Crowd Force		Contact APE	Contact APE	77,000 lb (34,926.61 kg)	150,000 lb (68,038.86 kg)
Suspended Weight		1,060 lbs (481 kg)	1,130 lbs (513 kg)	4,310 lb (1,954.98 kg)	5,700 lb (2,585.48 kg)
Length		18 in (45 cm)	18 in (45 cm)	25 in (63.5 cm)	25 in (63.5 cm)
Width of Lead Section		Contact APE	Contact APE	26 in (66.04 cm)	26 in (66.04 cm)
Shipping Width Overall		20 in (49 cm)	20 in (49 cm)	48 in (121.92 cm)	48 in (121.92 cm)
Height		59 in (149 cm)	59 in (149 cm)	61.5 in (156.21 cm)	68 in (173 cm)
ID of Output Shaft		3 in (7.62 cm)	3 in (7.62 cm)	3 in (7.62 cm)	3 in (7.62 cm)
ID of Rotary Joint		3 in (7.62 cm)	3 in (7.62 cm)	3 in (7.62 cm)	3 in (7.62 cm)
API Adapters (type)		3 inch Hex	3 inch Hex	3 inch, 4 inch	3 inch, 4 inch
Lead Adapters (type)		Contact APE	Contact APE	8 x 26, 8 x 32 Custom Available	8 x 26, 8 x 32 Custom Available



SEE **J&M TOP DRIVE**
AUGERS PAGE 48

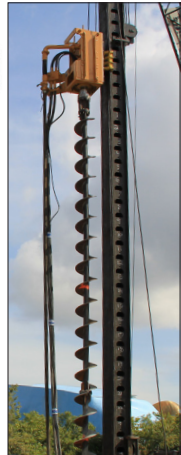
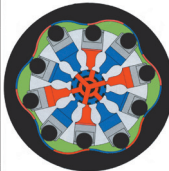
TOP DRIVE AUGER

75BB	80BB	100BB
12,150 per 1,000 psi (1,679.8 per 69 bar)	14,572 per 1,000 psi (2,014.65 per 69 bar)	18,182 per 1,000 psi (2,514 kgm per 69 bar)
5,800 psi (399.9 bar)	5,500 psi (379.21 bar)	5,500 psi (379.21 bar)
30 rpm	30 rpm	30 rpm
120 @ 4.17 gal/rev (454 @ 15.79 lit/rev)	125 @ 5 gal/rev (473 @ 18.93 lit/rev)	140 @ 5 gal/rev (530 @ 18.93 lit/rev)
508 hp (378.72 kW)	401 hp (299.03 kW)	401 hp (299.03 kW)
6,075 per 1,000 psi (839.9 per 69 bar)	7,266 per 1000 psi (1,004.56 per 69 bar)	7,2600 per 1,000 psi (1004.56 per 69 bar)
5,800 psi (400 bar)	4,500 psi (310.26 bar)	4,500 psi (310.26 bar)
60 rpm	61 rpm	61 rpm
120 @ 2.09 gal/rev (454 @ 7.91 lit/rev)	125 @ 2.5 gal / rev (473 @ 9.46 lit / rev)	140 @ 2.5 gal / rev (530 @ 9.46 lit / rev)
406 hp (302.75 kW)	328 hp (244.59 kW)	465 hp (348 kW)
150,000 lb (68,038.86 kg)	150,000 lbs (68,038.86 kg)	150,000 lbs (68,038.86 kg)
3,130 lb (1,419.74 kg)	4,630 lbs (2,100.13 kg)	5,630 lbs (2,554 kg)
25 in (63.5 cm)	25 in (63.5 cm)	25 in (63.5 cm)
26 in (66.04 cm)	26 in (66.04 cm)	26 in (66.04 cm)
48 in (121.92 cm)	48 in (121.92 cm)	48 in (121.92 cm)
68 in (173 cm)	68 in (173 cm)	68 in (173 cm)
3 in (7.62 cm)	3 in (7.62 cm)	3 in (7.62 cm)
3 in (7.62 cm)	3 in (7.62 cm)	3 in (7.62 cm)
3 inch, 4 inch	3 inch, 4 inch	3 inch, 4 inch
8 x 26, 8 x 32 Custom Available	8 x 26, 8 x 32 Custom Available	up to 54" leader



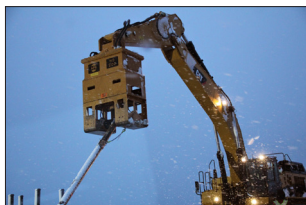
RADIAL PISTON MOTOR HAS HIGHEST VOLUMETRIC AND MECHANICAL EFFICIENCIES WITH ITS OUTSIDE RADIAL PISTON DESIGN.

OVERSIZED SHAFT BEARINGS AND LOCKNUT RETENTION OFFERS THE HIGHEST VERTICAL AND RADIAL LOADS IN THE INDUSTRY.



HD DRIVERS

Type		HD40	HD50	HD50L	HD70	HD80
Low Speed High Torque	Torque ft-lbs (kg-m)	7,119 per 1,000 psi (641 per 69 bar)	7,700 per 1,000 psi (1,065 per 69 bar)	7,700 per 1,000 psi (1,065 per 69 bar)	12,122 per 1,000 psi (1,676 per 69 bar)	14,528 per 1,000 psi (2,009 per 69 bar)
	Max Pressure	5,000 psi (345 bar)	4,500 psi (310 bar)	4,500 psi (310 bar)	4,640 psi (320 bar)	5,075 psi (350 bar)
	Rotation Speed	105 rpm	38 rpm	38 rpm	30 rpm	29 rpm
	Max Flow gpm (lpm)	55 @ 1.11 gal/rev (208 @ 4.20 lit/rev)	100 @ 2.65 gal/rev (379 @ 10 lit/rev)	100 @ 2.65 gal/rev (379 @ 10 lit/rev)	120 @ 3.96 gal/rev (454 @ 14.99 lit/rev)	145 @ 4.99 gal/rev (549 @ 18.89 lit/rev)
	Max Horse Power	240 hp (186kW)	180 hp (134 kW)	180 hp (134 kW)	325 hp (242 kW)	429 hp (320 kW)
High Speed Low Torque	Torque ft-lbs (kg-m)	3,560 per 1,000 psi (420 per 69 bar)	N/A	N/A	5,758 per 1,000 psi (796 per 69 bar)	7,267 per 1,000 psi (1005 per 69 bar)
	Max Pressure	3,000 psi (207 bar)	N/A	N/A	3,000 psi (207 bar)	5,075 psi (350 bar)
	Rotation Speed	210 rpm	N/A	N/A	61 rpm	58 rpm
	Max Flow gpm (lpm)	55 @ .55 gal/rev (208 @ 2.61 lit/rev)	N/A	N/A	120 @ 1.66 gal/rev (454 @ 6.28 lit/rev)	145 @ 2.46 gal/rev (549 @ 9.31 lit/rev)
	Max Horse Power	96 hp (72 kW)	N/A	N/A	210 hp (157 kW)	429 hp (320 kW)
Weight (w/Clamp) * = No Clamp	4800 lb (2,177 kg)	4,725 lb (2,143 kg)	3,800 lb* (1,723 kg*)	8,640 lb (3,919 kg)	8,440 lb (3,828 kg)	
Depth	29.5 in (749 mm)	25 in (635 mm)	25 in (635 mm)	24 in (610 mm)	24 in (610 mm)	
Width	42 in (1,067 mm)	53 in (1,499 mm)	53 in (1,499 mm)	61 in (1,549 mm)	61 in (1,549 mm)	
Height * = No Clamp	70 in (1,778 mm)	89 in (2,261 mm)	59 in* (1,499 mm)	99 in (2,515 mm)	97 in (2,464 mm)	
Minimum Excavator Capacity Example Listed	44,000 lb (19,958 kg) CAT 320D	44,000 lb (19,958 kg) CAT 320D	44,000 lb (19,958 kg) CAT 320D	56,440 lb (25,601 kg) CAT 320E	56,440 lb (25,601 kg) CAT 320E	





HD DRIVERS

HD150	HD200	HD375	HD500
26,727 per 1,000 psi (3,695 per 69 bar)	40,029 per 1,000 psi (5,534 per 69 bar)	79,757 per 1,000 psi (11,027 per 69 bar)	93,681 per 1,000 psi (12,961 per 69 bar)
5,000 psi (345 bar)	5,000 psi (345 bar)	4,700 psi (324 bar)	5,400 psi (372 bar)
27 rpm	18 rpm	6.5 rpm	8 rpm
250 @ 9.31 gal/rev (946 @ 35.24 lit/rev)	250 @ 13.94 gal/rev (946 @ 52.77 lit/rev)	225 @ 34.6 gal/rev (852 @ 131.1 lit/rev)	237 @ 29.6 gal/rev (897 @ 112.1 lit/rev)
700 hp (522 kW)	700 hp (522 kW)	464 hp (346 kW)	746 hp (556 kW)
N/A	N/A	35,957 per 1,000 psi (4,971 per 69 bar)	N/A
N/A	N/A	4700 psi (324 bar)	N/A
N/A	N/A	9 rpm	N/A
N/A	N/A	130 @ 14.4 gal/rev (492.1 @ 54.6 lit/rev)	N/A
N/A	N/A	290 hp (216 kw)	N/A
11,850 lb (5,374 kg)	14,500 lb (6,576 kg)	17,500 lb (7938 kg)	Consult Factory
24 in (610 mm)	29.5 in (749 mm)	53.2 in (1,352 mm)	92.2 in (2,343 mm)
61 in (1,549 mm)	70 in (1,778 mm)	86 in (2,184 mm)	81 in (2,073 mm)
109 in (2,769 mm)	120 in (3,048 mm)	137 in (3,480 mm)	117 in (2,962 mm)
117,500 lb (53,297 kg) CAT 349E	156,000 lb (70,760 kg) CAT 374D	Consult Factory	Consult Factory





HYDRAULIC IMPACT

Type	Low Headroom				Offshore	
Model	4-2	5-2	6-2	7-3	40-4	60-4
Ram Weight	8,000 lbs (3,628 kg)	10,000 lbs (4,536 kg)	12,000 lbs (5,443 kg)	14,000 lbs (6,350 kg)	80,000 lbs (36,287 kg)	120,000 lbs (54,431 kg)
Rated Energy	16,000 ft-lbs (21.69 kNm)	20,000 ft-lbs (27.12 kNm)	24,000 ft-lbs (32.54 kNm)	42,000 ft-lbs (56.94 kNm)	320,000 ft-lbs (433.86 kNm)	480,000 ft-lbs (650.79 kNm)
Stroke at Rated Energy	24 in (60.96 cm)	24 in (60.96 cm)	24 in (60.96 cm)	36 in (91.44 cm)	48 in (121.92 cm)	48 in (121.92 cm)
Blows Per Minute	45-75 min-max	45-75 min-max	45-75 min-max	30-65 min-max	30-65 min-max	30-65 min-max
Weight w/o Insert	13,700 lb (6,214.22 kg)	15,200 lb (6,894.6 kg)	17,200 lb (7,801.79 kg)	20,500 lb (9,298.64 kg)	Varies with pile size	Varies with pile size
Height	105 in (266.7 cm)	105 in (266.7 cm)	105 in (266.7 cm)	126 in (320.04 cm)	390 in (990.6 cm)	472 in (1,198.88 cm)
Standard Lead Size	8"x26"	8"x26"	8"x26"	8"x26"	Offshore	Offshore

HYDRAULIC IMPACT HAMMERS (HIH)



HAMMERS (HIH)

Standard				-5 Series			
8-3	8-4	10-4	15-4	15-5	20-5	25-5	30-5
16,000 lbs (7,257 kg)	16,000 lbs (7,257 kg)	20,000 lbs (9,072 kg)	30,000 lbs (13,608 kg)	30,000 lbs (13,608 kg)	40,000 lbs (18,144 kg)	50,000 lbs (22,680 kg)	60,000 lbs (27,215 kg)
48,000 ft-lbs (65.08 kNm)	64,000 ft-lbs (86.77 kNm)	80,000 ft-lbs (108.47 kNm)	120,000 ft-lbs (162.7 kNm)	150,000 ft-lbs (203 kNm)	200,000 ft-lbs (271 kNm)	250,000 ft-lbs (339 kNm)	300,000 ft-lbs (407 kNm)
36 in (91.44 cm)	48 in (121.92 cm)	48 in (121.92 cm)	48 in (121.92 cm)	60 in (152.4 cm)	60 in (152.4 cm)	60 in (152.4 cm)	60 in (152.4 cm)
30-65 min-max	30-65 min-max	30-65 min-max	30-65 min-max	25-55 min-max	25-55 min-max	25-55 min-max	25-55 min-max
22,500 lb (10,205.83 kg)	23,800 lb (10,795.5 kg)	27,800 lb (12,609.87 kg)	42,000 lb (19,050.88 kg)	46,000 lbs (20,865 kg)	56,000 lbs (25,401 kg)	72,000 lbs (32,659 kg)	82,000 lbs (37,194 kg)
126 in (320.04 cm)	144 in (365.76 cm)	144 in (365.76 cm)	175 in (444.5 cm)	234 in (579.12 cm)	252 in (640 cm)	270 in (685.8 cm)	288 in (731.5 cm)
8"x26"	8"x26"	8"x26"	8"x32"	8"x32"	8"x32"	8"x32"	8"x32"

Note: All technical specifications are subject to change without notice.



**CONTROL
PANEL WITH
TELEMATICS**



**KIDNEY LOOP
FILTRATION AND
HYDRAULIC
COOLING**



**CUSTOM BALL
VALVES
FOR SERVICE**



**COMPLETE
TOOL SET
MOUNTED
IN DOOR
PANEL**



**ADVANCED
HYDRAULIC
CONTROLLED
FAN DRIVE**

POWER UNIT TIER II & III SPECIFICATIONS

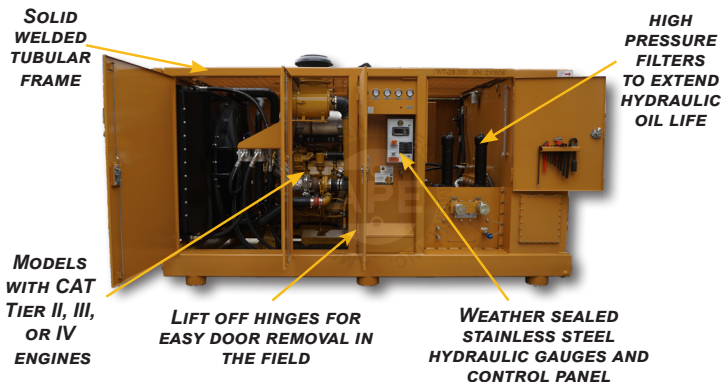
Model	127	275	375	475	595	765	1050	1200
Engine Type	Caterpillar C4.4 Tier III	Caterpillar C7 Tier III	Caterpillar C9 Tier III	Caterpillar C13 Tier III	Caterpillar C15 Tier III	Caterpillar C18 Tier II	Caterpillar C27 Tier II	Caterpillar C32 Tier II
Rated Horse Power	127 HP 95 kW	275 HP 205 kW	375 HP 276 kW	475 HP 354 kW	595 HP 444 kW	765 HP 570 kW	1050 HP 738 kW	1,200 HP 895 kW
Rated Drive Pressure	2,500 psi 172 bar	4,800 psi 331 bar	4,800 psi 331 bar	4,800 psi 331 bar	4,800 psi 331 bar	4,800 psi 331 bar	4,800 psi 331 bar	4,800 psi 331 bar
Drive Flow	60 gpm 227 lpm	85 gpm 322 lpm	120 gpm 454 lpm	147 gpm 556 lpm	188 gpm 712 lpm	220 gpm 833 lpm	273 gpm 1,033 lpm	294 gpm 1,113 lpm
Weight	4,750 lbs 2,155 kg	11,000 lbs 4,990 kg	12,600 lbs 5,715 kg	13,800 lbs 6,260 kg	19,000 lbs 8,618 kg	19,000 lbs 8,618 kg	22,500 lbs 10,206 kg	23,000 lbs 10,433 kg
Length	99 in 251 cm	116.5 in 296 cm	126.5 in 321 cm	127.5 in 324 cm	151.75 in 385 cm	151.75 in 385 cm	169 in 428 cm	169 in 428 cm
Width	45 in 114 cm	58.75 in 149 cm	68.5 in 174 cm	73.5 in 187 cm	82 in 208 cm	82 in 208 cm	87 in 221 cm	87 in 221 cm
Height	66 in 168 cm	83.5 in 212 cm	82 in 208 cm	92.25 in 234 cm	94 in 239 cm	94 in 239 cm	103 in 262 cm	103 in 262 cm

POWER UNIT TIER IV SPECIFICATIONS

Model	14	33	50	124	275	375
Engine Type	Kohler CH440	Caterpillar C1.7 Tier IV	Caterpillar C2.2 Tier IV	Caterpillar C4.4 Tier IV	Caterpillar C7 Tier IV	Caterpillar C9B Tier IV
Rated Horse Power	14 HP (10.5 kW)	33.5 HP (25 kW)	50 HP (37 kW)	124 HP (92 kW)	275 HP (205 kW)	375 HP (280 kW)
Rated Drive Pressure	0 - 3,500 psi (241 bar)	0-2,500 psi (172 bar)	0 - 2,500 psi (172 bar)	0 - 2,500 psi (172 bar)	0 - 5,076 psi (350 bar)	0 - 5,076 psi (350 bar)
Drive Flow	6 gpm (22 lpm)	20 gpm (76 lpm)	32 gpm (121 lpm)	60 gpm (227 lpm)	85 gpm (322 lpm)	120 gpm (454 lpm)
Clamp Pressure	3,500 psi (241 bar)	Consult Factory	Consult Factory	Consult Factory	4,800 psi (331 bar)	4,800 psi (331 bar)
Clamp Flow	6 gpm (23 lpm)	Consult Factory	Consult Factory	Consult Factory	10 gpm (38 lpm)	10 gpm (38 lpm)
Engine Speed	3,000 rpm	2,800 rpm	1,800 rpm	2,200 rpm	1,800 rpm	1,800 rpm
Weight	275 lb (125 kg)	1,500 lbs (680 kg)	2,900 lbs (1,315 kg)	4,750 lb (2,155 kg)	14,000 lb (6,300 kg)	15,000 lb (6,804 kg)
Length	24 in (61 cm)	40 in (102 cm)	69 in (175 cm)	105 in (266 cm)	140 in (355 cm)	140 in (355 cm)
Width	32 in (80 cm)	36 in (92 cm)	45 in (114 cm)	45 in (114 cm)	76 in (193 cm)	76 in (193 cm)
Height	42 in (107 cm)	55 in (139 cm)	50 in (137 cm)	66 in (168 cm)	81 in (206 cm)	81 in (206 cm)
Hydraulic Reservoir	20 gal (75 L)	30 gal (114 L)	55 gal (208 L)	140 gal (530 L)	300 gal (1,135 L)	300 gal (1,135 L)
Fuel Capacity	1.50 gal (5.68 L)	12 gal (45 L)	24 gal (91 L)	75 gal (284 L)	140 gal (530 L)	140 gal (530 L)



POWER UNITS



	456	475	580	755	800	950	1200
	Caterpillar C9B Tier IV	Caterpillar C13 Tier IV	Caterpillar C15 Tier IV	Caterpillar C18 Tier IV	Caterpillar C18 Tier IV	Caterpillar C27 Tier IV	Caterpillar C32 Tier IV
	456 HP (340 kW)	475 HP (354 kW)	580 HP (432 kW)	755 HP (563 kW)	800 HP (596 kW)	950 HP (708 kW)	1,200 HP (895 kW)
	0 - 5,076 psi (350 bar)	0 - 5,800 psi (400 bar)	0-4700 psi (324 bar)	0 - 5,800 psi (400 bar)	0 - 5,800 psi (400 bar)	0 - 5,076 psi (350 bar)	0 - 5,076 psi (350 bar)
	150 gpm (568 lpm)	150 gpm (568 lpm)	225 gpm (852 lpm)	241 gpm (912 lpm)	242 gpm (916 lpm)	278 gpm (1,052 lpm)	294 gpm (1,113 lpm)
	4,800 psi (331 bar)	4,800 psi (331 bar)	4,800 psi (331 bar)	4,800 psi (331 bar)	4,800 psi (331 bar)	4,800 psi (331 bar)	4,800 psi (331 bar)
	10 gpm (38 lpm)	10 gpm (38 lpm)	10 gpm (38 lpm)	10 gpm (38 lpm)	10 gpm (38 lpm)	10 gpm (38 lpm)	10 gpm (38 lpm)
	1,800 rpm	1,800 rpm	1,800 rpm	1,800 rpm	1,800 rpm	1,800 rpm	1,800 rpm
	15,000 lb (6,804 kg)	20,000 lb (9,072 kg)	17,500 lb (7,938 kg)	22,750 lb (10,319 kg)	23,300 lbs (10,569 kg)	28,000 lb (12,701 kg)	28,750 lb (13,041 kg)
	140 in (355 cm)	150 in (380 cm)	165 in (419 cm)	186 in (472 cm)	186 in (472 cm)	186 in (472 cm)	186 in (472 cm)
	76 in (193 cm)	80 in (201 cm)	88 in (224 cm)	96 in (244 cm)	96 in (244 cm)	87 in (221 cm)	87 in (221 cm)
	81 in (206 cm)	88 in (226 cm)	97 in (247 cm)	90 in (229 cm)	90 in (229 cm)	103 in (262 cm)	103 in (262 cm)
	300 gal (1,135 L)	305 gal (1,155 L)	568 gal (2,150 L)	660 gal (2,498 L)	660 gal (2,498 L)	760 gal (2,877 L)	760 gal (2,877 L)
	140 gal (530 L)	117 gal (443 L)	145 gal (553 L)	178 gal (674 L)	178 gal (674 L)	180 gal (681 L)	180 gal (681 L)



SINGLE ACTING DIESEL HAMMERS

	Maximum Energy	Minimum Energy	Ram Weight	Hammer Weight
D8-42	19,845 ft-lbs (27.79 kNm)	9,724 ft-lbs (13.13 kNm)	1,764 lb (0.8 tonnes)	4,540 lb (2,059 kg)
D12-42	29,768 ft-lbs (40.19 kNm)	14,884 ft-lbs (20.09 kNm)	2,646 lb (1.2 tonnes)	6,890 lb (3,125 kg)
D16-52	39,690 ft-lbs (53.58 kNm)	19,845 ft-lbs (26.79 kNm)	3,528 (1.6 tonnes)	8,000 lb (3,629 kg)
D19-52	47,132 ft-lbs (63.63 kNm)	23,566 ft-lbs (31.81 kNm)	4,189 lb (1.9 tonnes)	8,400 lb (3,810 kg)
D25-52	62,016 ft-lbs (83.72 kNm)	31,008 ft-lbs (41.86 kNm)	5,512 lb (2.5 tonnes)	12,569 lb (5,700 kg)
D30-52	74,419 ft-lbs (100.47 kNm)	37,209 ft-lbs (50.23 kNm)	6,615 lb (3 tonnes)	13,571 lb (6,156 kg)
D36-26	89,303 ft-lbs (120.56 kNm)	44,651 ft-lbs (60.28 kNm)	7,938 lb (3.6 tonnes)	17,150 lb (7,779 kg)
D36-52	89,303 ft-lbs (120.56 kNm)	43,758 ft-lbs (59.07 kNm)	7,938 lb (3.6 tonnes)	22,795 lb (10,339 kg)
D46-52	114,109 ft-lbs (154.05 kNm)	55,913 ft-lbs (75.48 kNm)	10,143 lb (4.6 tonnes)	25,000 lb (11,340 kg)
D50-52	124,031 ft-lbs (167.44 kNm)	60,775 ft-lbs (82.05 kNm)	11,025 lb (5 tonnes)	25,882 lb (11,740 kg)
D62-52	153,799 ft-lbs (207.63 kNm)	76,899 ft-lbs (103.81 kNm)	13,671 lb (6.2 tonnes)	29,100 lb (13,200 kg)
D70-52	173,644 ft-lbs (234.42 kNm)	86,822 ft-lbs (117.21 kNm)	15,435 lb (7 tonnes)	30,864 lb (14,000 kg)
D80-42	198,450 ft-lbs (267.91 kNm)	127,008 ft-lbs (171.46 kNm)	17,640 lb (8 tonnes)	38,434 lb (17,433 kg)
D100-42	248,063 ft-lbs (334.88 kNm)	158,760 ft-lbs (214.33 kNm)	22,050 lb (10 tonnes)	47,000 lb (21,319 kg)
D125-42	310,078 ft-lbs (418.61 kNm)	198,450 ft-lbs (267.91 kNm)	27,563 lb (12.5 tonnes)	62,000 lb (28,123 kg)



SINGLE ACTING DIESEL HAMMER



SINGLE ACTING DIESEL HAMMERS - CON'T

	Maximum Energy	Minimum Energy	Ram Weight	Hammer Weight
D128-42	317,520 ft-lbs (428.65 kNm)	203,213 ft-lbs (275.34 kNm)	28,224 lb (12.8 tonnes)	68,000 lb (30,844 kg)
D138-42	342,326 ft-lbs (462.14 kNm)	219,089 ft-lbs (295.77 kNm)	30,429 lb (13.8 tonnes)	70,295 lb (31,885 kg)
D160-42	396,900 ft-lbs (535.82 kNm)	242,109 ft-lbs (326.85 kNm)	35,280 lb (16 tonnes)	85,000 lb (38,555 kg)
D180-42	446,513 ft-lbs (602.79 kNm)	272,373 ft-lbs (367.70 kNm)	39,690 lb (18 tonnes)	92,000 lb (41,730 kg)
D220-42	545,738 ft-lbs (736.75 kNm)	332,900 ft-lbs (449.41 kNm)	48,510 lb (22 tonnes)	102,820 lb (46,638 kg)
D260-42	644,963 ft-lbs (870.70 kNm)	393,427 ft-lbs (531.13 kNm)	57,330 lb (26 tonnes)	118,830 lb (53,900 kg)
D320	785,500 ft-lbs (1,065 kNm)	453,955 ft-lbs (612.84 kNm)	70,550 lb (32 tonnes)	152,000 lb (69,000 kg)

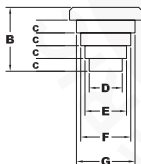


Note: All technical specifications are subject to change without notice.

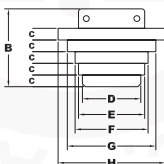
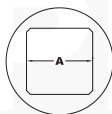
PIPE INSERTS

	Wt#	A	B	C	D	E	F	G	H
16" (406 mm)	730 lb (331 kg)	17 in (432 mm)	17.1 in (434 mm)	3 in (16 mm)	7.87 in (200 mm)	9.85 in (250 mm)	11.9 in (302 mm)	13.85 in (352 mm)	-
24" (610 mm)	1,770 lb (802 kg)	17 in (431 mm)	20 in (507 mm)	3 in (16 mm)	15 in (381 mm)	17 in (431 mm)	18.75 in (476 mm)	22.5 in (577 mm)	26 in (660 mm)
30" (762 mm)	2,340 lb (1,061 kg)	17 in (431 mm)	18.5 in (470 mm)	2.5 in (64 mm)	11 in (279 mm)	18 in (457 mm)	25 in (635 mm)	31.9 in (813 mm)	-

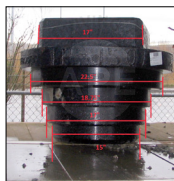
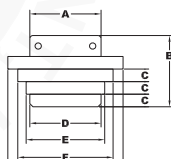
16" PIPE INSERT



24" PIPE INSERT



30" PIPE INSERT



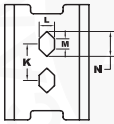
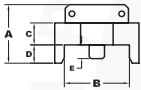
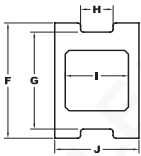
SHEET PILE INSERTS

	Wt#	A	B	C	D	E	F	G
DCS-1	1,700 lb (771 kg)	16 in (406 mm)	17 in (432 mm)	6 in (152 mm)	5 in (127 mm)	3.75 (95 mm)	31.5 in (800 mm)	25.5 in (648 mm)
DCS-5	3,080 lb (1,397 kg)	18 in (457 mm)	19.75 in (502 mm)	6 in (152 mm)	5 in (127 mm)	3.5 in (89 mm)	42 in (1,067 mm)	32 in (813 mm)
DCS-7	4,050 (1,837 kg)	18 in (457 mm)	20.25 in (514 mm)	8 in (203 mm)	5 in (127 mm)	3.5 in (89 mm)	48 in (1,220 mm)	32 in (813 mm)

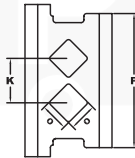
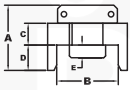
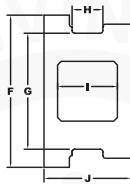


INSERTS

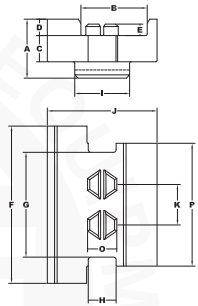
SHEETPILEINSERTDCS-1



SHEETPILEINSERTDCS-5



SHEETPILEINSERTDCS-7

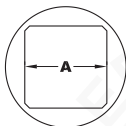


H	I	J	K	L	M	N	O	P
8.5 in (216 mm)	16.5 in (419 mm)	22 in (559 mm)	10 in (254 in)	4 in (102 mm)	2.9 in (76 mm)	6.8 in (172 mm)	-	-
8.5 in (216 mm)	16.7 in (425 mm)	25.5 in (648 mm)	12.25 in (312 mm)	-	-	-	7.75 in (197 mm)	37.5 in (952 mm)
8.5 in (216 mm)	16.7 in (425 mm)	33.5 in (850 mm)	12.35 in (314 mm)	-	-	-	-	37.5 in (952 mm)

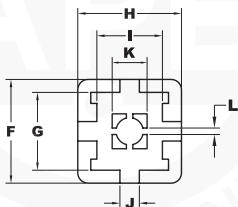
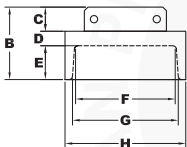
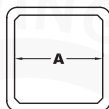
H-PILE INSERTS

	Wt#	A	B	C
12" (305 mm) Round	1,060 lb (481 kg)	17 in (432 mm)	20 in (508 mm)	5 in (127 mm)
14" (356 mm) Round	1,220 lb (553 kg)	25 in (635 mm)	20 in (508 mm)	5 in (127 mm)
12" & 14" (305 & 356 mm) Waffle	850 lb (386 kg)	17 in (432 mm)	11 in (279 mm)	5 in (127 mm)
16" & 18" (406 & 457 mm) Waffle	2,140 lb (971 kg)	17 in (432 mm)	17 in (432 mm)	5 in (127 mm)

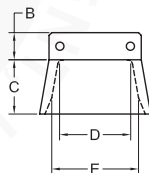
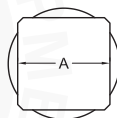
H-PILE INSERT - ROUND



H-PILE INSERT - WAFFLE



WOOD INSERT



WOOD INSERTS

	Wt#	A	B	C	D	E
17" (432 mm)	893 lb (446 kg)	20 in (508 mm)	5 in (127 mm)	11.25 in (286 mm)	15.5 in (394 mm)	17 in (432 mm)
19" (483 mm)	1,175 lb (533 kg)	19 in (484 mm)	5 in (127 mm)	18 in (457 mm)	16 in (406 mm)	19 in (482 mm)



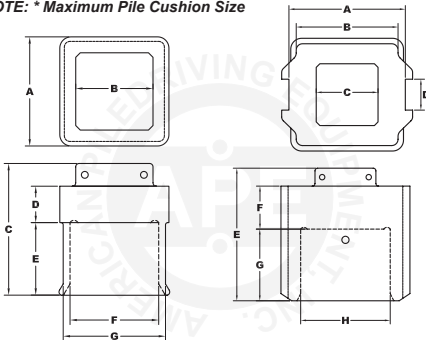
INSERTS

	D	E	F	G	H	I	J	K	L
	3 in (76 mm)	12 in (305 mm)	17 in (432 mm)	17.7 in (449 mm)	26.5 in (675 mm)	-	-	-	-
	3 in (76 mm)	12 in (305 mm)	21 in (533 mm)	21.65 in (550 mm)	26.6 in (676 mm)	-	-	-	-
	3 in (76 mm)	3 in (76 mm)	20 in (508 mm)	15 in (381 mm)	20 in (508 mm)	12.65 in (321 mm)	3.75 in (95 mm)	6.75 in (171 mm)	1.25 in (32 mm)
	6 in (152 mm)	6 in (152 mm)	26 in (660 mm)	19 in (482 mm)	26 in (660 mm)	19 in (482 mm)	2.5 in (64 mm)	13 in (330 mm)	2.5 in (64 mm)

BOX INSERTS

	Wt#	A	B	C	D	E	F	G	H
*10" (254 mm)	1,480 lb (671 kg)	20 in (508 mm)	17 in (432 mm)	27 in (685 mm)	6 in (152 mm)	16 in (406 mm)	11.5 in (293 mm)	14.5 in (369 mm)	-
*12" (305 mm)	1,610 lb (730 kg)	20 in (508 mm)	17 in (432 mm)	27 in (685 mm)	6 in (152 mm)	16 in (406 mm)	13.5 in (343 mm)	16.5 in (419 mm)	-
*14" (356 mm)	1,560 lb (708 kg)	20 in (508 mm)	17 in (432 mm)	27 in (686 mm)	6 in (152 mm)	16 in (406 mm)	15 in (381 mm)	20 in (508 mm)	-
*16" (406 mm)	1,810 lb (821 kg)	22 in (559 mm)	17 in (432 mm)	27 in (686 mm)	6 in (152 mm)	16 in (406 mm)	17 in (432 mm)	20 in (508 mm)	-
*18" (457 mm)	2,360 lb (1,070 kg)	24 in (610 mm)	17 in (432 mm)	29 in (736 mm)	8 in (203 mm)	16 in (406 mm)	19 in (482 mm)	22 in (559 mm)	-
*20" (508 mm)	2,840 lb (1,288 kg)	26 in (660 mm)	24 in (610 mm)	17 in (432 mm)	8.5 in (216 mm)	29 in (736 mm)	8 in (203 mm)	16 in (406 mm)	21.5 in (546 mm)
*24" (609 mm)	2,445 lb (1,109 kg)	32 in (813 mm)	31 in (790 mm)	17 in (432 mm)	8.5 in (215 mm)	37 in (940 mm)	12 in (305 mm)	20 in (508 mm)	25 in (636 mm)

NOTE: * Maximum Pile Cushion Size



10" - 18" BOX INSERT

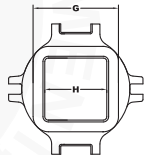
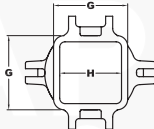
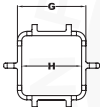
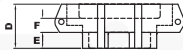
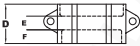
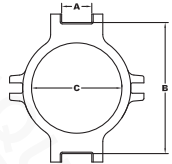
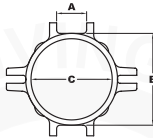
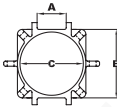
20" - 24" BOX INSERT



Note: All technical specifications are subject to change without notice.

DRIVE CAP BASES

	Wt#	A	B	C	D	E	F	G	H
20" - 4" (508 - 102 mm)	750 lb (340 kg)	8.5 in (216 mm)	20 in (508 mm)	18.25 in (464 mm)	11.5 in (292 mm)	4 in (102 mm)	4 in (101.6 mm)	20 in (508 mm)	17.5 in (445 mm)
26" - 6" (660 - 152 mm)	1,270 lb (576 kg)	8.5 in (216 mm)	26 in (660 mm)	23 in (584 mm)	14.5 in (367 mm)	4.5 in (114 mm)	4 in (101.6 mm)	21 in (533 mm)	17.5 in (445 mm)
26" - 9" (660 - 229 mm)	1,350 lb (612 kg)	8.5 in (216 mm)	26 in (660 mm)	23 in (584 mm)	17.5 in (443 mm)	4.5 in (114 mm)	4 in (101.6 mm)	21 in (533 mm)	17.5 in (445 mm)
32" - 6" (813 - 152 mm)	2,270 lb (1,030 kg)	8.5 in (216 mm)	32 in (813 mm)	25.5 in (648 mm)	16.5 in (419 mm)	4.5 in (114 mm)	6 in (153 mm)	24 in (612 mm)	17.5 in (445 mm)
32" - 9" (813 - 229 mm)	2,420 lb (1,097 kg)	8.5 in (216 mm)	32 in (813 mm)	25.5 in (648 mm)	19.5 in (495 mm)	4.5 in (114 mm)	6 in (153 mm)	24 in (612 mm)	17.5 in (445 mm)
37" - 6" (940 - 152 mm)	3,020 lb (1,370 kg)	8.5 in (216 mm)	37 in (940 mm)	25.5 in (648 mm)	18.5 in (470 mm)	4.5 in (114 mm)	8 in (203 mm)	24 in (612 mm)	17.5 in (445 mm)
37" - 9" (940 - 229 mm)	2,790 lb (1,266 kg)	8.5 in (216 mm)	37 in (940 mm)	25.5 in (648 mm)	19.5 in (495 mm)	4.5 in (114 mm)	6 in (153 mm)	24 in (612 mm)	17.5 in (445 mm)
43" - 6" (1,092 - 152 mm)	3,400 lb (1,542 kg)	8.5 in (216 mm)	43 in (1092 mm)	25.5 in (648 mm)	18.5 in (470 mm)	4.5 in (114 mm)	8 in (203 mm)	24 in (612 mm)	17.5 in (445 mm)
43" - 9" (1,092 - 229 mm)	4,070 lb (1,846 kg)	8.5 in (216 mm)	43 in (1092 mm)	30.5 in (775 mm)	21.5 in (545 mm)	4.5 in (114 mm)	8 in (203 mm)	24 in (612 mm)	17.5 in (445 mm)



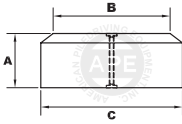
20" DRIVE CAP BASE

26" DRIVE CAP BASE

32" 37" & 43" DRIVE CAP BASE



STRIKER PLATES | DRIVE CAP BASES | HELMETS



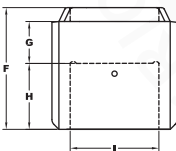
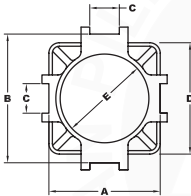
STRIKER PLATES

	Wt#	A	B	C
17.75" (450 mm)	440 lb (199 kg)	6 in (152 mm)	14 in (356 mm)	17.75 in (451 mm)
22.5" (572 mm)	650 lb (295 kg)	6 in (152 mm)	18 in (457 mm)	22.5 in (572 mm)
25" (635 mm)	1,036 lb (470 kg)	8 in (203 mm)	19 in (485 mm)	25.0 in (635 mm)
30" (762 mm)	2,400 lb (1,089 kg)	12 in (305 mm)	29 in (737 mm)	30 in (762 mm)

ONE PIECE BOX HELMETS

	Wt#	A	B	C	D	E	F	G	H	I
*24" (610 mm)	5,818 lb (2,639 kg)	32 in (813 mm)	37 in (940 mm)	8.5 in (216 mm)	32 in (813 mm)	25.5 in (648 mm)	35 in (889 mm)	12 in (305 mm)	19 in (483 mm)	25.5 in (645 mm)
*30" (762 mm)	6,195 lb (2,810 kg)	37 in (940 mm)	43 in (1092 mm)	8.5 in (216 mm)	36 in (914 mm)	25.5 in (648 mm)	42 in (1,067 mm)	12 in (305 mm)	24 in (610 mm)	31.5 in (800 mm)

NOTE: * Maximum Pile Cushion Size



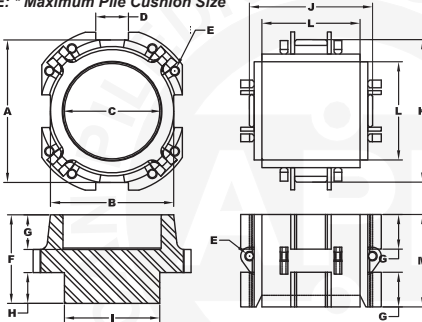
ONE PIECE BOX HELMET

Note: All technical specifications are subject to change without notice.

TWO PIECE BOX HELMETS

	Wt#	A	B	C	D	E	F	G	H
*24" (610 mm)	8,770 lb (3,978 kg)	37 in (940 mm)	32 in (813 mm)	25.5 in (648 mm)	8.5 in (216 mm)	2 in (51 mm)	23 in (584 mm)	9 in (229 mm)	8 in (203 mm)
*30" (762 mm)	10,850 lb (4,921 kg)	43 in (1092 mm)	42.5 in (1080 mm)	30.5 in (775 mm)	8.5 in (216 mm)	2 in (51 mm)	23 in (584 mm)	9 in (229 mm)	8 in (203 mm)
*36" (914 mm)	14,700 lb (6,667 kg)	54 in (1372 mm)	43 in (1092 mm)	30.5 in (775 mm)	8.5 in (216 mm)	2 in (51 mm)	23 in (584 mm)	9 in (229 mm)	8 in (203 mm)

NOTE: * Maximum Pile Cushion Size



TWO PIECE BOX HELMET



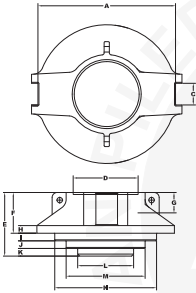
PIPE HELMETS

	Wt#	A	B	C	D	E
32/37" - 25.5" (813/940 - 648 mm)	3,400 lb (1,542 kg)	17 in (432 mm)	37 in (940 mm)	8.5 in (216 mm)	25.5 in (648 mm)	24 in (610 mm)
37/43" - 25.5" (940/1092 - 648 mm)	6,660 lb (3,021 kg)	43 in (1,092 mm)	37 in (940 mm)	8.5 in (216 mm)	25.5 in (648 mm)	28.5 in (724 mm)
37/43" - 30.5" (940/1092 - 775 mm)	6,560 lb (2,976 kg)	43 in (1,092 mm)	37 in (940 mm)	8.5 in (216 mm)	30.5 in (775 mm)	28.5 in (724 mm)
54" - 30.5" (1,372 - 775 mm)	8,810 lb (3,996 kg)	54 in (1,371 mm)	-	8.5 in (216 mm)	30.5 in (775 mm)	25 in (635 mm)

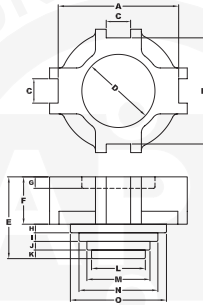


TWO PIECE & PIPE HELMETS

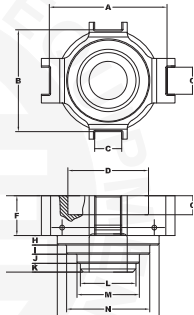
I	J	K	L	M
24.75 in (629 mm)	32 in (813 mm)	37 in (940 mm)	25.5 in (648 mm)	36 in (914 mm)
30.75 in (781 mm)	37 in (940 mm)	43 in (1092 mm)	31.5 in (800 mm)	36 in (914 mm)
36.75 in (933 mm)	43 in (1092 mm)	54 in (1372 mm)	37.5 in (953 mm)	36 in (914 mm)



54" PIPE HELMET



37" TO 43" PIPE HELMET



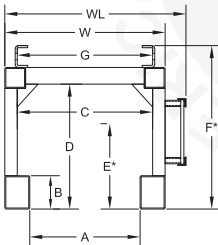
32" TO 37" PIPE HELMET

F	G	H	I	J	K	L	M	N	O
12.5 in (318 mm)	6 in (152 mm)	3 in (76 mm)	2.9 in (73 mm)	2.9 in (73 mm)	2.75 in (70 mm)	17.5 in (445 mm)	19.6 in (499 mm)	26.1 in (663 mm)	32 in (813 mm)
16.5 in (419 mm)	6 in (152 mm)	3 in (76 mm)	3 in (76 mm)	3 in (76 mm)	3 in (76 mm)	18.75 in (476 mm)	22 in (559 mm)	27.5 in (699 mm)	33.5 in (851 mm)
16.5 in (419 mm)	6 in (152 mm)	3 in (76 mm)	3 in (76 mm)	3 in (76 mm)	3 in (76 mm)	18.75 in (476 mm)	22 in (559 mm)	27.5 in (699 mm)	33.5 in (851 mm)
16 in (406 mm)	8 in (203 mm)	-	3 in (76 mm)	3 in (76 mm)	3 in (76 mm)	22 in (558 mm)	31 in (788 mm)	40 in (1,016 mm)	-

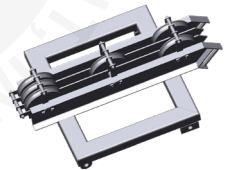
BOX LEADS

	8 x 21	8 x 26	8 x 32	8 x 37	8 x 43	10 x 54
A	21.50 in 54.61 cm	26.50 in 67.31 cm	32.50 in 82.55 cm	37.50 in 95.25 cm	43.50 in 110.5 cm	54.50 in 138.43 cm
B	8.00 in 20.32 cm	8.00 in 20.32 cm	8.00 in 20.32 cm	8.00 in 20.32 cm	8.00 in 20.32 cm	10.00 in 25.4 cm
C	27.50 in 69.85 cm	32.50 in 82.55 cm	38.50 in 97.79 cm	43.50 in 110.5 cm	49.50 in 125.73 cm	62.50 in 158.75 cm
D	30.00 in 76.2 cm	30.00 in 76.2 cm	34.00 in 86.36 cm	42.00 in 106.68 cm	46.00 in 116.84 cm	48.00 in 121.92 cm
E	15.29 in 38.84 cm	15.29 in 38.84 cm	16.94 in 43.03 cm	20.22 in 51.36 cm	21.87 in 55.55 cm	28.00 in 71.12 cm
E*	22.10 in 56.13 cm	22.10 in 56.13 cm	24.50 in 62.23 cm	29.29 in 74.40 cm	31.69 in 80.49 cm	N/A
F	34.00 in 86.36 cm	34.00 in 86.36 cm	38.00 in 96.52 cm	46.00 in 116.84 cm	50.00 in 127 cm	54.00 in 137.16 cm
F*	39.25 in 99.70 cm	39.25 in 99.70 cm	43.25 in 109.86 cm	51.25 in 130.18 cm	55.25 in 140.33 cm	N/A
G	27.50 in 69.85 cm	32.50 in 82.55 cm	38.50 in 97.79 cm	43.50 in 110.49 cm	49.50 in 125.73 cm	N/A
W	33.50 in 85.09 cm	38.50 in 97.79 cm	44.50 in 113.03 cm	49.50 in 125.73 cm	55.50 in 140.97 cm	74.50 in 189.23 cm
WL	38.50 in 97.79 cm	43.50 in 110.5 cm	49.50 in 125.73 cm	54.50 in 138.43 cm	60.50 in 153.67 cm	79.50 in 201.93 cm
Weight	130 lb/ft (193.19 kg/m)	135 lb/ft (200.83 kg/m)	141 lb/ft (209.75 kg/m)	146 lb/ft (217.20 kg/m)	152 lb/ft (226.15 kg/m)	280 lb/ft (416.59 kg/m)

Pinup rail weight per ft. = 15 lbs



BOOMPt.CONNECTOR



HEADBLOCK



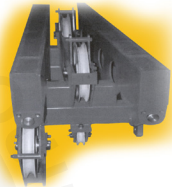
LEADS

FRONT RIDING LEADS

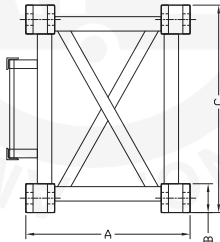
	ST-75	ST-100	ST-150	ST-190
A	28.5 in (72.4 cm)	28.5 in (72.4 cm)	28.5 in (72.4 cm)	37 in (93.98 cm)
B	3 in (7.62 cm)	3 in (7.62 cm)	5 in (12.7 cm)	5 in (12.7 cm)
C	36 in (91.44 cm)	36 in (91.44 cm)	36 in (91.44 cm)	45 in (114.3 cm)
Weight per ft.	75 lb (34.01 kg)	100 lb (45.35 kg)	150 lb (68.02 kg)	190 lb (86.16 kg)



BOTTOM STABER



**HEADBLOCK
2 OR 3 LINE**



PILE GATE

OFFSHORE LEADS

Lead Size	Min pile size	Max pile size	Overall length	Overall width
43"	16 in (40.6 cm)	38 in (96.5 cm)	39 ft (11.8 m)	61 in (155 cm)
54"	18 in (45.7 cm)	48 in (122 cm)	39 ft (11.8 m)	72 in (183 cm)
78"	32 in (81.3 cm)	72 in (182.9 cm)	39 ft (11.8 m)	90 in (228.6 cm)

Offshore leaders for up to 12 ft (3.65 m) piles are available

APE offshore leaders are designed to give the operator the best available control during the driving of both vertical and batter (raked) piles. Pin on offshore bells allow the greatest versatility for a standard lead section, Drive helmets and pin on drive bells are available for both pipe and concrete piles.



OFFSHORE LEADS | OFFSHORE BELLS**BOTTOM DRIVE SYSTEMS
PIN ON OFFSHORE BELLS**

Standard leader size	Minimum pile size	Maximum pile size	Overall length
8 x 32 in 20.3 x 81.3 cm	16 in (40.6 cm)	42 in (106.7 cm)	6 ft (1.8 m)
8 x 37 in 20.3 x 94 cm	60 in (152.4 cm)	122 in (310 cm)	8 ft (2.44 m)
8 x 43 in 20.3 x 109.2 cm	32 in (81.3 cm)	72 in (182.8 cm)	8 ft (2.44 m)
10 x 54 in 20.3 x 137.2 cm	36 in (81.3 cm)	122 in (310 cm)	12 ft (3.66 m)

APE Bottom Drives and pin on offshore bells are designed reduce the overall weight of a driving helmet by utilizing a mid or top section of standard lead. Bottom drive bells can be made for multiple pile diameters greatly increasing its versatility.



Bottom Drives for up to 12' (3.65 m) piles available including extended boots for batter/raked piles.

SPOTTERS

	APE 50	APE 100	APE 150	APE 225	J&M 368
Hydraulic Extension	10 ft 3.05 m	10 ft 3.05 m	20 ft 6.10 m	20 ft 6.10 m	30 ft 9.14 m
Manual Extension	8 ft 2.43 m	10 ft 3.05 m	0 ft 0 m	0 ft 0 m	0 ft 0 m
Extend Force	31,400 lb 14243 kg	18,000 lb 8165 kg	28,000 lb 12700 kg	31,500 lb 14288 kg	60,000 lb 27216 kg
Retract Force	16,600 lb 7530 kg	19,000 lb 8618 kg	32,000 lb 14515 kg	23,500 lb 10660 kg	62,000 lb 28123 kg
Collapsed Length*	22 ft 6.70 m	17 ft 5.18 m	17 ft 5.18 m	21.5 ft 6.55 m	26 ft 7.92 m
L/R Travel Extended	12 ft 7" 5.39 m	6 ft 1.83 m	35 ft 10.67 m	41.5 ft 12.65 m	52 ft 15.85 m
L/R Force Extended	3,050 lb 1383 kg	7,200 lb 3266 kg	12,000 lb 5443 kg	28,000 lb 12700 kg	28,000 lb 12700 kg
L/R Travel Retracted	6 ft 10" 1.86 m	6 ft 1.83 m	15 ft 4.57 m	20 ft 6.10 m	23 ft 7.01 m
L/R Force Retracted	5,650 lb 2562 kg	7,200 lb 3266 kg	25,900 lb 11748 kg	64,000 lb 29030 kg	64,000 lb 29030 kg
Maximum Width	6 ft 1.83 m	8 ft 2.44 m	8 ft 2.44 m	9 ft 2.74 m	10 ft 3.05 m
Operating Pressure	2,500 psi	2,500 psi	2,500 psi	2,500 psi	2,500 psi
Weight	5,600 lb 2540 kg	7,000 lb 3175 kg	8,500 lb 3856 kg	10,000 lb 4536 kg	31,100 lb 31100 kg
Power Lead Rotation	Optional	Optional	Optional	Optional	Optional

* Distance from rear pivot to back of leads





J&M Foundation Equipment

J&M Foundation Equipment is a wholly owned subsidiary of American Piledriving Equipment, Inc.

30 years of excellence, and always J&M. Though we have designed and manufactured LBF, ICE & HMC brand equipment, the engineering expertise, and the invaluable experience gained, has always resided at J&M. Building our future on this foundation, and a commitment to customer satisfaction, the J&M name will always mean advanced design, extreme reliability and cost effective value. Couple this with a huge parts inventory, in house engineering, machining and fabrication; and no job is too special, no delivery is too stringent, and down time is not an option.

Vibratory Pile Driver/Extractors

Power Units

Hydraulic Impact Hammers

Top Drive Earth Augers

Robovib

Accessories and Attachments

J&M's proven concept of modularity provides exceptional flexibility for both customer operations and the J&M rental fleet. By designing our power units to operate various types of foundation equipment, maximum utilization, availability and value are achieved. A typical J&M power unit can operate a vibratory driver, a hydraulic impact hammer, an auger, a pile crusher and a submersible pump, without modification or special controls.

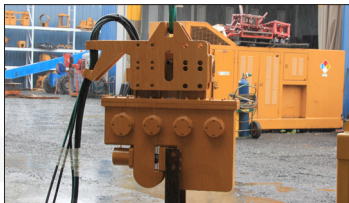
J&M VIBRATORY DRIVER/EXTRACTORS

	23-51	28-35	44-50	66-80	77
Eccentric Moment	230 in-lbs	2,800 in-lbs	4,400 in-lbs	6,600 in-lbs	7,700 in-lbs
Drive Force at Rated Frequency	8.4 tons (747 kN)	80 tons (711 kN)	160 tons (1423 kN)	240 tons (2135 kN)	298 tons (2648)
(VPM) Rated Frequency	1,600	1,600	1,600	1,560	1,650
Amplitude	0.58 in (1.5 cm)	1.17 in (3 cm)	1.17 in (3 cm)	1.23 in (3.1 cm)	Contact APE
Max Extraction Pull	13 tons (115.6 kN)	75 tons (667 kN)	80 tons (711.7 kN)	80 tons (711.7 kN)	133 tons (1,183 kN)
Max Bare Hammer Weight	1,520 lb (690 kg)	9,180 lb (4164 kg)	12,400 lb (5625 kg)	15,330 lb (6940 kg)	17,000 lb (7,711 kg)
Length	26 in (66 cm)	92 in (233.7 cm)	97 in (246.4 cm)	97 in (246.4 cm)	97 in (246.4 cm)
Width	16 in (40.6 cm)	22 in (56 cm)	22 in (56 cm)	22 in (56 cm)	Contact APE
Throat Width	10.5 in (26.7 cm)	15 in (38 cm)	14.25 in (36.2 cm)	14.25 in (36.2 cm)	14.75 in (37 cm)
Height w/o clamp	42 in (106.4 cm)	70.25 in (178.5 cm)	83 in (211 cm)	100 in (254 cm)	100 in (254 cm)

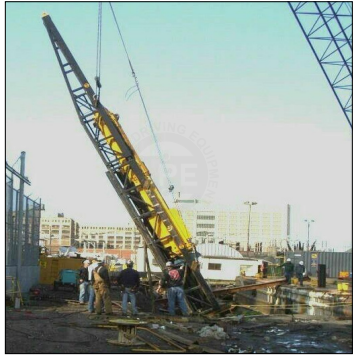




VIBRATORY DRIVER/EXTRACTORS



- 30 years of innovation and refinement insure reliability
- Variable frequency, weight & line pull for job matching
- Vibrator moment optimized for available horsepower
- Largest selection of clamps and accessories in the industry
- Forged high alloy gears are precision ground
- On hammer brake minimizes boom shake
- High efficiency, bent axis, piston motors
- Gun drilling and machined manifolds eliminate leaks
- Proper bearings and lubrication insure long life
- Open loop hydraulics for efficiency and reliability
- Quickly adaptable for underwater or low head room applications
- Remote speed control and emergency stop on pendant
- Clamp cylinders machined from solid & include lock valve



J&M HYDRAULIC IMPACT HAMMERS (HIH)

	115	160	220
Ram Weight	11,500 lb	16,000 lb	22,000 lb
Maximum Stroke	4 ft	4 ft	4 ft
Minimum Stroke	1 ft	1 ft	1 ft
Hammer Weight (bare)	17,000 lb	28,600 lb	35,000 lb
Hyd. Hose Length	100 ft	100 ft	100 ft
Hyd. Hose Weight	850 lb	1340 lb	1340 lb
Depth	36 in	46 in	48 in
Width	26 in	32 in	32 in
Height (bare)	19'-9"	20'-3"	20'-3"
Model # Power Unit	175	230	375



HYDRAULIC IMPACT HAMMERS



- Single piece, chrome alloy, forged ram – non-segmental
- 100% hydraulic, infinitely variable, stroke control system
- Elastomeric cylinder to ram, anti-shock, connection
- No threaded fasteners permitted on ram forging.
- Forged, alloy steel, striker block & standard drive caps
- Proven and ultra-rugged, 4-column, tensioned cable frame
- Piston style accumulators.
- Hard-chromed columns and self-lubricating ram bearings
- Optional wireless energy readout – downloadable
- Compatible with other hydraulic sources
- No wires, no sensors, no computers, no problem

Note: All technical specifications are subject to change without notice.

J&M TOP DRIVE AUGERS

		35AT	55AT
Low Speed High Torque	Torque (ft-lbs/kg-m)	5,430 ft-lbs per 1,000 psi (750 kgm per 69 bar)	10,547 ft-lbs per 1,000 psi (1,458 kgm per 69 bar)
	Max Pressure	5,500 psi (379.21 bar)	5,500 psi (379.21 bar)
	Rotation Speed	47 rpm	24 rpm
	Max Flow (gpm/lpm)	85 gpm @ 1.8 gal/rev (322 lpm @ 6.81 lit/rev)	85 gpm @ 3.5 gal/rev (322 lpm @ 13.2 lit/rev)
	Max Horse Power	273 hp (204 kW)	273 hp (204 kW)
High Speed Low Torque	Torque (ft-lbs/kg-m)	3,473 ft-lbs per 1,000 psi (480 kgm per 69 bar)	3,555 ft-lbs per 1,000 psi (491 kgm per 69 bar)
	Max Pressure	5,500 psi (379.21 bar)	5,500 psi (379.21 bar)
	Rotation Speed	73 rpm	72 rpm
	Max Flow (gpm/lpm)	85 gpm @ 1.2 gal/rev (322 lpm @ 4.5 lit/rev)	85 gpm @ 1.2 gal/rev (322 lpm @ 4.5 lit/rev)
	Max Horse Power	223 hp (166 kW)	223 hp (166 kW)
Crowd Force		35,000 lbs (15,875.73 kg)	80,000 lbs (36,290 kg)
Suspended Weight		3,500 lb (1,588 kg)	5,000 lb (2,268 kg)
Depth		38 in (96.52 cm)	38 in (96.52 cm)
Width of Lead Section		26 in (66 cm)	26 in (66 cm)
Shipping Width Overall		31.32 in (79.5 cm)	30.50 in (77.5 cm)
Height		52 in (132 cm)	52 in (132 cm)
ID of Output Shaft		3 in (7.6 cm)	3 in (7.6 cm)
Rotary Swivel ID		3 in (7.6 cm)	3 in (7.6 cm)
API Adapters (type)		API 3 inch, API 4 inch	API 3 inch, API 4 inch
Lead Adapters (type)		8 x 26, 8 x 32	8 x 26, 8 x 32



TOP-DRIVE AUGERS

100K
24,400 ft-lbs per 1,000 psi (3,373.42 kgm per 69 bar)
4,500 psi (310.26 bar)
23 rpm
196 gpm @ 8.5 gal/rev (742 lpm @ 32.18 lit/rev)
500 hp (372.85 kW)
12,200 ft-lbs per 1,000 psi (1,686.71 kgm per 69 bar)
4,500 psi (310.26 bar)
46 rpm
196 gpm @ 4.3 gal/rev (742 lpm @ 16.28 lit/rev)
500 hp (372.85 kW)
80,000 lbs (36,290 kg)
9,500 lbs (4,309.13 kg)
62 in (157.48 cm)
37 in (93.98 cm)
79 in (200.66 cm)
127 in (322.58 cm)
7.38 in (18.75 cm)
3 in (7.6 cm)
200 mm Male Hex
U-37, ST-150, ST-190



- Single speed, two speed or Autotorque
- Pre-drill, tie backs, cast in place, soil-nails, mini-piles
- Bolted flange, Hex or API flanging connections
- Oversize roller bearings on output shaft for crowd
- Easy shaft seal replacement in field
- Heavy duty final drive gears practically indestructible
- Lifting bale with or without sheave
- Roller or angle lead guides for 20", 26", 32"
- Compatible with other hydraulic sources
- Autotorque has ultra low speed for grouting & DHH
- 3", 4", 5" through hole in output shaft
- Rotary joint and plumbing for grout and fluid injection
- Grout hose connection via Victaulic™ connectors

RoboVibe

These excavator-mounted vibros allow a single operator to unload H and I beams and sheet piles, raise them to the vertical, position them precisely, and drive them to grade -- all with NO extra equipment needed, and with superior speed and power.

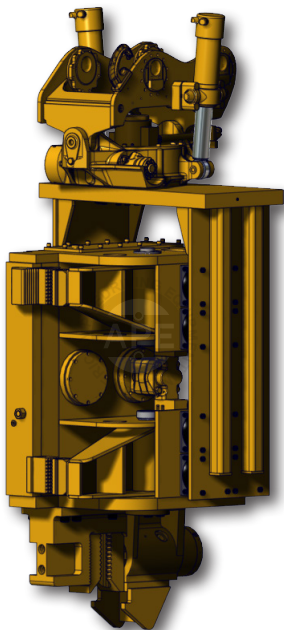
- The ROBOVIBE eccentrics are located within the fixed side grip arm. Center-line of dynamic force is much closer to the gripping jaws, reducing off center force input to pile.
- Vertical distance between side grip jaws is increased to better resist off-center force
- ROBOVIBE eccentric moment is 22% greater than competitive units, producing significantly larger driving amplitude.
- Each clamp has an individual actuating cylinder. No poorly guided, trouble prone, dual purpose cylinders as in competitive units
- Side grip cylinders are directly mounted to arms and are hydraulically synchronized.
- Proven tilt and rotate mechanism is designed for digging duty, and has sealed lubrication for bearings and worm gear. Cast housing and integral rotation motor maintain perfect alignment for worm gear and massive rotation bearing. Dual tilt cylinders are telescopic, providing lower profile and equal left and right tilt torque.
- ROBOVIBE +/- 40 deg tilt is 33% more than the competition, allowing additional reach when loading or unloading piles.
- Rectangular clamp jaws on side grips provide more clamping area than round jaws.
- Bottom clamp uses precision-guided slider per accepted vibratory hammer practice. Clamp cylinder is directly aligned with the fixed jaw - no offset.
- Most components contained within welded steel frame for protection and exceptional strength.
- No solenoid valves or wiring mounted on ROBOVIBE. Valves and wiring are remotely mounted on excavator boom to avoid vibration damage.
- Both the side grip and the bottom clamp jaws are identical to minimize inventory. Additionally, all ROBOVIBE jaws have the J&M exclusive "Kryptonite" coating for exceptional wear life.





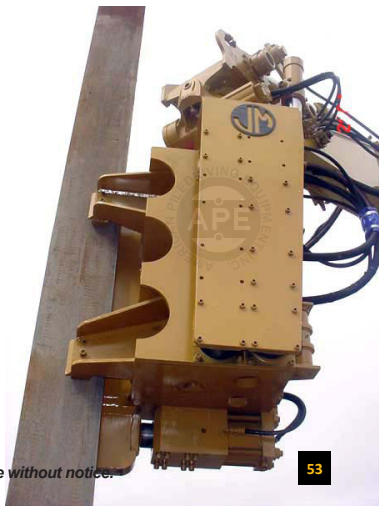
ROBOVIBE

- Three eccentrics are vertically stacked to minimize distance between driving force and pile center.
- Commonly available elastomers isolate vibration from excavator. Extra elastomer mounting positions are provided so spring rate may be optimized for tough pile extraction applications.
- Lockable adjusting nuts eliminate clearance in side grip arms to reduce vibration wear, and insure long life
- Commercial, high pressure gear motor is interchangeable to exactly match excavator hydraulic flow to ROBO-VIB. No flow controls or restrictions to cause damaging heat buildup in excavator hydraulic system.
- Gun-drilled hydraulic distribution manifold is integral to suspension yoke to minimize plumbing, and perfectly align hydraulic swivel.
- Replaceable offset bushings at the excavator connection allow pin diameter and center distance changes to accommodate various brands and sizes of excavators.
- Minimum width, fixed side clamp arm allows driving of H-piles as small as 10”.



Powered by excavator hydraulics and fully articulated, RoboVibe drives piles up to 40' long, much more economically and with greater safety than conventional crane-handled methods. Efficient, built for long life and heavy duty, and able to drive piles from the side or from the top, RoboVibe answers the need for a reliable excavator-mounted vibratory driver.

Note: All technical specifications are subject to change without notice.



J&M LOW HEAD ROOM VIBRATORY DRIVER/EXTRACTORS

	216S	416S	44S
Eccentric Moment	1,100 in-lb	2,200 in-lb	4,400 in-lb
Height with Clamp	45 in	59 in	68 in
Width	90 in	114 in	140 in
Depth	17 in	18 in	21 in
Throat Depth	14 in	13 in	18 in
Weight with Clamp	3,400 lb	4,700 lb	9,300 lb
Line Pull	10 tons	14 tons	28 tons



J&M VIBRATORY DRIVER/EXTRACTOR

	Type	Clamps	Pressure	Weight
10'	Clamp Extension	126,127,55	---	2300 lb
40'	Clamp Extension	126,127,196,55	---	16400 lb
90°	Turning Plate	126,127	---	1100 lb
Db1	Diverting Valve	---	5000 psi	80 lb
Db1	Diverting Sol. Valve	---	5000 psi	250 lb
Db1	Inline Cross Relief	---	5000 psi	30 lb



VIBROS | ACCESSORIES | CRUSHER



APE MODEL 24" & 30" PILE CRUSHER

- 200 ton crushing force
- Extra heavy duty construction – NO CASTING
- Heat treated, alloy, steel blades
- Replaceable, abrasion resistant, blade guides
- NFPA standard, repairable, hydraulic cylinders
- Machined manifolds replace vulnerable plumbing
- Low hydraulic operating pressure for long life
- Special cylinder rod seals exclude dirt and abrasives
- Chain suspension contains pile
- Universal blades Crush 12" thru 30" square piles
- Spacer stroke adjustment insures consistency



ACCESSORIES

L x W x D	Compatibility
120"x37"x14"	28-35, 44-50, 66-80
480"x37"x17"	28-35, 44-50, 66-80
4"x37"x37"	28-35, 44-50, 66-80
6"x7"x12"	Vibro, Auger, HIH
16"x12"x6	Vibro, Auger, HIH
6"x6"x14"	Vibro, Auger, HIH

J&M CAISSON BEAMS

	Compatibility	Range	Clamp	Weight	L x W x D
3'	216	14.13"Ø - 36"Ø	80	725 lb (329 kg)	63"
7'	416B, 28-35, 44-50	14.13"Ø - 84"Ø	80	1,400 lb (635 kg)	9"x110"x6"
11'	416B, 44-50, 66-80	14.13"Ø - 136"Ø	80	6,725 lb (3,050 kg)	19"x150"x17"



J&M VIBRATORY HYDRAULIC CLAMPS

	Type	Range	Max Force	Weight	L x W x D	Compatibility
126	Sheeting	0 - 1.50"	126 Ton	2,400 lb (1,089 kg)	38"x46"x12"	28-35, 44-50, 416B
196	Sheeting	0 - 2.00"	196 Ton	2,940 lb (1,334 kg)	38"x57"x12"	66-80
80	Caisson	16"Ø - 132"Ø	80 Ton	990 lb (449 kg)	22"x28"x11"	44-50, 28-35, 416B
122	Caisson	22"Ø - 120"Ø	126 Ton	1,700 lb (771 kg)	25"x58"x14"	66-80



BEAMS | CLAMPS | MOBILE MAST

Model 3030 Drill Mast



- 30 feet of linear auger travel
- 30" maximum flighting diameter
- 30,000 ft.-lb. allowable auger torque
- 30,000 lb of extraction force via top mounted winch
- 15,000 lb of crowd force via rear mounted winch
- Uses J&M Model 3050 auger drive or equal
- Fore and aft mast angle adjusted by excavator cylinder
- Left & right mast angle adjustment $\pm 10^\circ$
- Optional 3" grout swivel
- All drilling functions controlled by existing joystick
- No modifications to excavator hydraulic system or controls
- Locking valves prevent cylinder drift
- Pressure control & diverting valves on mast
- Self erecting

CFA AUGER TOOL

Pre-drill and create auger cast piles all using the HD Driver and our CFA tool. The driver clamps easily attach the CFA tool to the hex-head socket drive interface of the driver's motor, delivering direct-drive energy for maximum torque. The hollow center of the driver and tooling allows for grout for auger cast material to be inserted into the pre-drilled hole, even during pre-drill extraction.

HD MATERIAL

Our material is available in a variety of sizes and lengths. They are proven to provide the most reliable foundations, resist deformation, can be grouted or un-grouted during installation, & are guaranteed to last!

HYDRAULIC IMPACT HAMMERS

Green, fast, and reliable, our Hydraulic Impact Hammer Series can be easily attached to the Mobile Mast for high powered piledriving.

VIBRATORY HAMMERS

Low noise and high speed, our vibratory hammers allow you to drive a variety of piles in record time. Easy installation with the Mobile Mast increases production speeds even more!

DIESEL HAMMERS

The simple design and efficiency of the Diesel Hammer has made it a veteran in the industry. Our Mobile Mast allows for mounting Diesel Hammer sizes up to AP's D19 model easily, so you can get on the job and get to work right away.

CROSS COMPATIBLE
ONE RIG. MANY APPLICATIONS.

LOCATIONS

CORPORATE OFFICE

NORTHWEST

7032 South 196th St.
Kent, Washington 98032

(800) 248-8498

(253) 872-0141

stevec@americanpiledriving.com

kellyg@americanpiledriving.com

chrisw@americanpiledriving.com

WEST COAST

Stockton, California

(888) 245-4401

(209) 942-2166

chriscc@americanpiledriving.com

GULF REGION

Conroe, Texas

(800) 596-2877

(936) 271-1044

Gonzales, Louisiana

(877) 293-4244

(225) 644-7722

joew@americanpiledriving.com

SOUTHEAST

Mulberry, Florida

(800) 570-3844

(863) 324-0378

jimc@americanpiledriving.com

jimb@americanpiledriving.com

wallyb@americanpiledriving.com

MID-ATLANTIC

Virginia Beach, Virginia

(866) 399-7500

(757) 518-9740

jimmyd@americanpiledriving.com

NORTHEAST

Sayreville, New Jersey

(888) 217-7524

(732) 432-6604

paulk@americanpiledriving.com

billz@americanpiledriving.com

MIDWEST

St. Peters, Missouri

(855) 303-4580

(636) 397-8400

Loganh@americanpiledriving.com

APE CANADA

Edmonton, AB

(855) 328-9888

(780) 474-9888

ericl@americanpiledriving.com

APE SOUTH AMERICA

(863) 660-8716

jimc@americanpiledriving.com

APE MÉXICO

+1(678) 558-4553

+1(206)368-3911

Davidm@americanpiledriving.com

APE CHINA

Shanghai, China

(+86) 21-5677-1221

(+86) 21-3604-0553

ericd@apevibro.com