



APE SERVICE BULLETIN

DEEP FOUNDATION SOLUTIONS

VIBRATORY HAMMER • POWER UNIT • AUGER SYSTEMS • DIESEL & HYDRAULIC HAMMERS
• DRILL RIGS • HYDRAULIC PILING RIGS • WICK DRAIN INSTALLERS • LEAD SYSTEMS



#44 HELICAL DRIVER CLAMP GREASE UPDATE

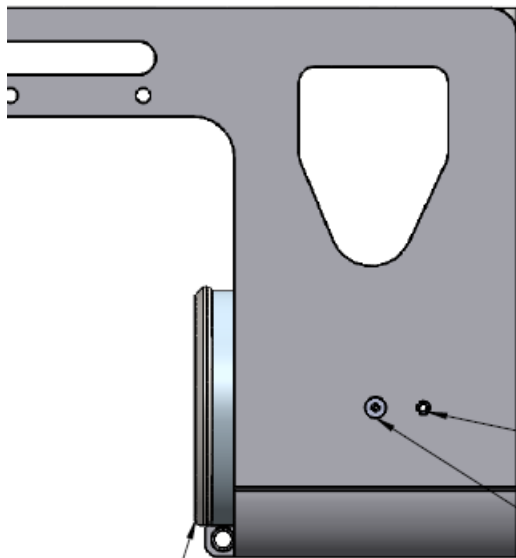
There have been a few HDC-13 clamps that had a problem with grout getting by the existing wiper, causing the bronze bushing to seize to the cylinder rod, pushing the bronze sleeve out of the clamp housing. To prevent this from occurring we have added an additional wiper. The secondary wiper retainer is to be welded to the outer tube of the cylinder assembly.

We have added a set screw and a grease zerk to both sides of each clamp cylinder housing. Machining is necessary to add the grease ports and set screws.

To complete the retrofit, the clamp will need to be fully disassembled for machine work and welding. Below is a table with the necessary parts to complete the retrofit.



DRAWING #	DESCRIPTION	QTY
2002906	HDC13 CLAMP MODIFICATION	N/A
2002903	ROD WIPER RETAINER	2
2002902	SET SCREW	4
221001	GREASE ZERK	4

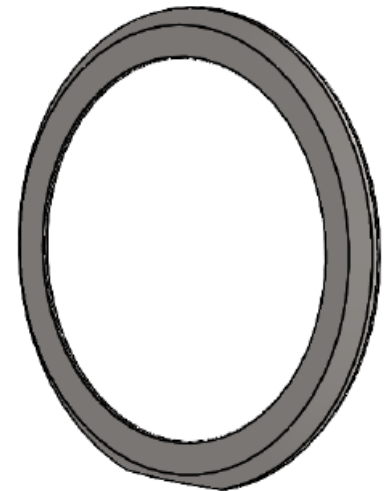


MODIFIED SHCS 1/2-13 X 5"

MACHINE FOR SET SCREW

MACHINE FOR GREASE ZERK

WIPER RETAINER RING



ROD WIPER RETAINER



800-248-8498
WWW.AMERICANPILEDIVING.COM

VISIT US



MOBILE APP
NOW AVAILABLE

