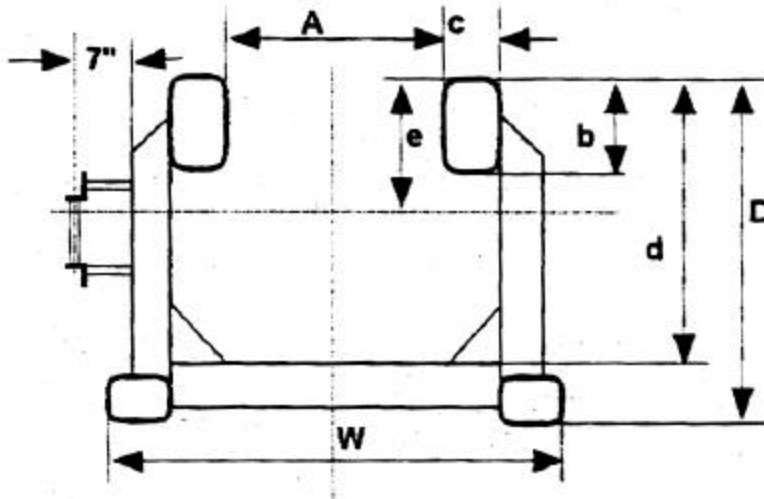


APE/FEC box leads dimensions.

The following dimensions are for FEC box leads purchased by APE. APE also manufactures its leads at the main facility in Kent, Washington. Consult the factory if you are unsure what type of lead you have. 800 248-8498



Dimensions:	Lead Size	8 x 20	8 x 26	8 x 32
A [in]		20.50	26.50	32.50
b [in]		8.00	8.00	8.00
c [in]		4.00	4.00	4.00
W [in]		36.50	42.50	48.50
D [in]		34.00	34.00	40.00
d [in]		29.50	29.50	33.50
e [in]		14.15	14.15	17.81
Weight:[incl.ladder]	[lbs/ft]	96	105	115

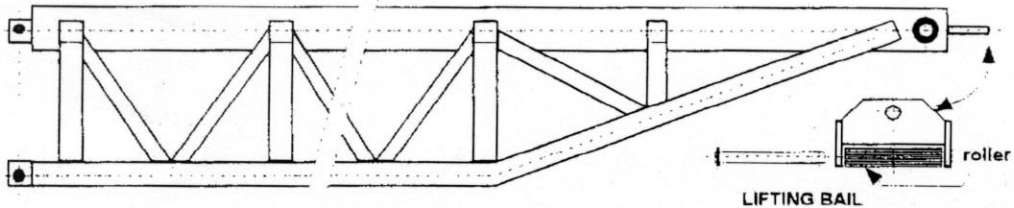
Geometric Properties:				
Moment of Inertia	Ix[in]^4	3331	3331	5425
	Iy[in]^4	3353	4933	7462
Section Modulus	Sx[in]^3	167	167	244
	Sy[in]^3	183	231	307
Radius of Gyration	Rx[in]	13.85	13.85	17.06
	Ry[in]	13.90	16.86	20.01

Material Properties:	Steel	ASTM A-500, GRADE B	
Tensile Strength		58000 psi	40000(N/sq.m)
Yield Strength		46000 psi	31700(N/sq.m)

F E C U - Leads

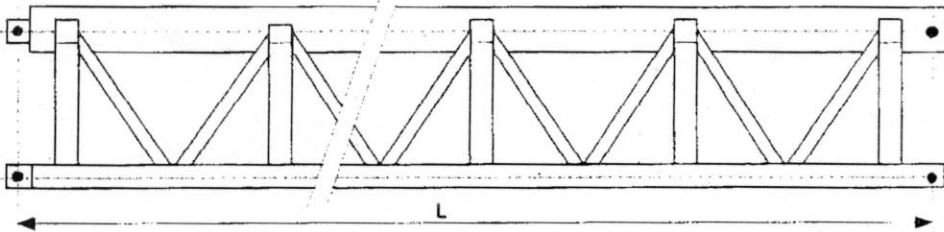
TAPERED TOP SECTION

STD. LENGTH 40FT, SHORTER SECTIONS UPON REQUEST



INTERMEDIATE SECTION

L = 10'-8" 15'-4" 20'-0" 29'-4" 39'-4"



STAB - SECTION

MIN. LENGTH WITH TIMBER POCKET 10FT, STD. SECTION 20FT, SECTION UP TO 40FT AVAILABLE

